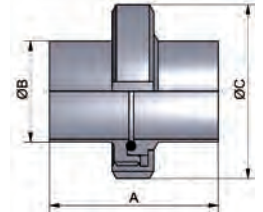


**Hygienearmaturen – HyCom-Armaturen**
**hygienic fittings – HyCom-fittings**
**Art.-Nr. 10101-**

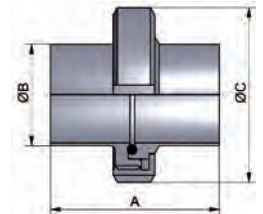
							AISI 316L-1.4404			
DN	A	B	C	D	E	Gew.	Art.-Nr.	Preis	Art.-Nr.	Preis
	mm	mm	mm	mm	mm	kg	Ra<0,8 EPDM	EUR	Ra<0,4 EPDM	EUR
10	76,0	13,0	38,0			0,101	-0108300	46,60	-0109300	(+)
15	76,0	19,0	44,0			0,161	-0158300	49,25	-0159300	(+)
20	76,0	23,0	54,0			0,251	-0208300	53,65	-0209300	(+)
25	77,0	29,0	63,0			0,401	-0258300	58,20	-0259300	(+)
32	88,0	35,0	70,0			0,492	-0328300	65,55	-0329300	(+)
40	88,0	41,0	78,0			0,603	-0408300	66,50	-0409300	(+)
50	89,0	53,0	92,0			0,783	-0508300	79,95	-0509300	(+)
65	113,0	70,0	112,0			1,395	-0658300	116,15	-0659300	(+)
80	117,0	85,0	127,0			1,846	-0808300	151,40	-0809300	(+)
100	120,0	104,0	148,0			2,477	-1008300	198,95	-1009300	(+)

 Deltaferritgehalt < 3,0% - wird in Einzelteilen geliefert  
 weitere Dichtungen siehe Artikel 10117

 content of delta-ferrite < 3,0% - delivered in single components  
 other gaskets see article 10117

**HyCom-**  
**Verschraubung**  
**DIN**  
**DIN 11864-V**
**HyCom-union**  
**DIN**  
**DIN 11864-V**
**Art.-Nr. 10102-**

							AISI 316L-1.4404			
DN	A	B	C	D	E	Gew.	Art.-Nr.	Preis	Art.-Nr.	Preis
	mm	mm	mm	mm	mm	kg	Ra<0,8 EPDM	EUR	Ra<0,4 EPDM	EUR
0,5"	76,0	12,7	38,0			0,101	-0128300	49,75	-0129300	(+)
0,75"	76,0	19,05	44,0			0,161	-0348300	54,05	-0349300	(+)
1"	77,0	25,4	63,0			0,441	-1008300	59,95	-1009300	(+)
1,5"	88,0	38,1	78,0			0,642	-1128300	68,60	-1129300	(+)
2"	89,0	50,8	92,0			0,833	-2008300	82,75	-2009300	(+)
2,5"	115,0	63,5	112,0			1,434	-2128300	118,75	-2129300	(+)
3"	117,0	76,2	127,0			1,946	-3008300	154,70	-3009300	(+)
4"	119,0	101,6	148,0			2,558	-4008300	200,15	-4009300	(+)

 Deltaferritgehalt < 3,0% - wird in Einzelteilen geliefert  
 weitere Dichtungen siehe Artikel 10118

 content of delta-ferrite < 3,0% - delivered in single components  
 other gaskets see article 10118

**HyCom-**  
**Verschraubung**  
**ASME**  
**DIN 11864-V**
**HyCom-union**  
**ASME**  
**DIN 11864-V**
**Art.-Nr. 10103-**

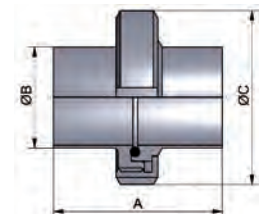
							AISI 316L-1.4404			
DN	A	B	C	D	E	Gew.	Art.-Nr.	Preis	Art.-Nr.	Preis
	mm	mm	mm	mm	mm	kg	Ra<0,8 EPDM	EUR	Ra<0,4 EPDM	EUR
13,5	76,0	13,5	38,0			0,141	-0088300	52,45	-0089300	(+)
17,2	76,0	17,2	44,0			0,201	-0108300	57,05	-0109300	(+)
21,3	78,0	21,3	54,0			0,311	-0158300	54,05	-0159300	(+)
26,9	78,0	26,9	63,0			0,421	-0208300	58,60	-0209300	(+)
33,7	88,0	33,7	70,0			0,512	-0258300	64,55	-0259300	(+)
42,4	88,0	42,4	78,0			0,643	-0328300	70,25	-0329300	(+)
48,3	90,0	48,3	92,0			0,903	-0408300	80,80	-0409300	(+)
60,3	114,0	60,3	112,0			1,574	-0508300	116,45	-0509300	(+)
76,1	117,0	76,1	127,0			2,105	-0658300	148,85	-0659300	(+)
88,9	122,0	88,9	148,0			3,056	-0808300	199,85	-0809300	(+)
114,3	130,0	114,3	178,0			4,448	-1008300	280,40	-1009300	(+)

 Deltaferritgehalt < 3,0% - wird in Einzelteilen geliefert  
 weitere Dichtungen siehe Artikel 10119

 content of delta-ferrite < 3,0% - delivered in single components  
 other gaskets see article 10119

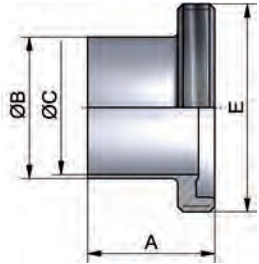
(+) Preis auf Anfrage

(+) price on inquiry


**HyCom-**  
**Verschraubung**  
**ISO**  
**DIN 11864-V**
**HyCom-union**  
**ISO**  
**DIN 11864-V**

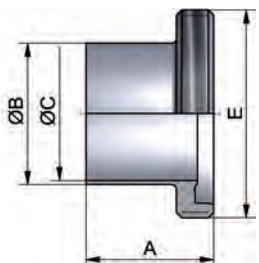
## Hygienearmaturen – HyCom-Armaturen hygienic fittings – HyCom-fittings

HyCom-Gewindestutzen DIN	Art.-Nr. 10106-							AISI 316L-1.4404			
	DN	A	B	C	D	E	Gew.	Art.-Nr. Ra<0,8	Preis EUR	Art.-Nr. Ra<0,4	Preis EUR
DIN 11864-GS	10	41,0	13,0	10,0		Rd28x1/8	0,020	-0108000	19,35	-0109000	(+)
	15	41,0	19,0	16,0		Rd34x1/8	0,040	-0158000	19,75	-0159000	(+)
HyCom-male DIN	20	43,0	23,0	20,0		Rd44x1/6	0,060	-0208000	21,35	-0209000	(+)
	25	43,0	29,0	26,0		Rd52x1/6	0,140	-0258000	24,05	-0259000	(+)
DIN 11864-GS	32	48,0	35,0	32,0		Rd58x1/6	0,160	-0328000	26,40	-0329000	(+)
	40	48,0	41,0	38,0		Rd65x1/6	0,200	-0408000	28,55	-0409000	(+)
	50	48,0	53,0	50,0		Rd78x1/6	0,260	-0508000	35,10	-0509000	(+)
	65	60,0	70,0	66,0		Rd95x1/6	0,440	-0658000	48,00	-0659000	(+)
	80	64,0	85,0	81,0		Rd110x1/4	0,620	-0808000	63,20	-0809000	(+)
	100	64,0	104,0	100,0		Rd130x1/4	0,740	-1008000	81,85	-1009000	(+)



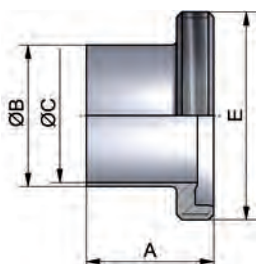
Deltaferritgehalt < 3,0% content of delta-ferrite < 3,0%  
Rd: Rundgewinde Rd: round thread

HyCom-Gewindestutzen ASME	Art.-Nr. 10107-							AISI 316L-1.4404			
	DN	A	B	C	D	E	Gew.	Art.-Nr. Ra<0,8	Preis EUR	Art.-Nr. Ra<0,4	Preis EUR
DIN 11864-GS	0,5"	41,0	12,7	9,4		Rd28x1/8	0,020	-0128000	20,90	-0129000	(+)
	0,75"	41,0	19,05	15,75		Rd34x1/8	0,040	-0348000	22,25	-0349000	(+)
HyCom-male ASME	1"	43,0	25,4	22,1		Rd52x1/6	0,160	-1008000	25,25	-1009000	(+)
	1,5"	48,5	38,1	34,8		Rd65x1/6	0,220	-1128000	30,00	-1129000	(+)
DIN 11864-GS	2"	48,5	50,8	47,5		Rd78x1/6	0,270	-2008000	36,90	-2009000	(+)
	2,5"	60,0	63,5	60,2		Rd95x1/6	0,440	-2128000	49,90	-2129000	(+)
	3"	64,0	76,2	72,9		Rd110x1/4	0,640	-3008000	64,90	-3009000	(+)
	4"	64,0	101,6	97,4		Rd130x1/4	0,760	-4008000	82,00	-4009000	(+)



Deltaferritgehalt < 3,0% content of delta-ferrite < 3,0%  
Rd: Rundgewinde Rd: round thread

HyCom-Gewindestutzen ISO	Art.-Nr. 10108-							AISI 316L-1.4404			
	DN	A	B	C	D	E	Gew.	Art.-Nr. Ra<0,8	Preis EUR	Art.-Nr. Ra<0,4	Preis EUR
DIN 11864-GS	13,5	41,0	13,5	10,3		Rd28x1/8	0,040	-0088000	22,25	-0089000	(+)
	17,2	41,0	17,2	14,0		Rd34x1/8	0,060	-0108000	23,70	-0109000	(+)
HyCom-male ISO	21,3	43,0	21,3	18,1		Rd44x1/6	0,120	-0158000	21,80	-0159000	(+)
	26,9	43,0	26,9	23,7		Rd52x1/6	0,140	-0208000	24,25	-0209000	(+)
DIN 11864-GS	33,7	48,0	33,7	29,7		Rd58x1/6	0,180	-0258000	26,95	-0259000	(+)
	42,4	48,0	42,4	38,4		Rd65x1/6	0,220	-0328000	29,20	-0329000	(+)
	48,3	49,0	48,3	44,3		Rd78x1/6	0,300	-0408000	35,85	-0409000	(+)
	60,3	60,0	60,3	56,3		Rd95x1/6	0,480	-0508000	48,45	-0509000	(+)
	76,1	64,0	76,1	72,1		Rd110x1/4	0,720	-0658000	63,75	-0659000	(+)
	88,9	64,0	88,9	84,3		Rd130x1/4	0,880	-0808000	82,10	-0809000	(+)
	114,3	68,0	114,3	109,7		Rd160x1/4	1,660	-1008000	108,20	-1009000	(+)



Deltaferritgehalt < 3,0% - Rd: Rundgewinde content of delta-ferrite < 3,0% - Rd: round thread  
(+) Preis auf Anfrage (+) price on inquiry



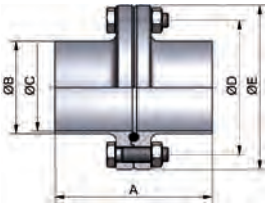
## Hygienearmaturen – HyCom-Armaturen

## hygienic fittings – HyCom-fittings

HyCom- Flanschverbindung DIN DIN 11864-F  HyCom-flange connection DIN DIN 11864-F	Art.-Nr. 10159-							AISI 316L-1.4404			
	DN	A	B	C	D	E	Gew.	Art.-Nr.	Preis	Art.-Nr.	Preis
		mm	mm	mm	mm	mm	kg	Ra<0,8 EPDM	EUR	Ra<0,4 EPDM	EUR
	10	80,0	13,0	10,0	37,0	54,0	0,401	-0108300	72,10	-0109300	(+)
	15	80,0	19,0	16,0	42,0	59,0	0,481	-0158300	74,30	-0159300	(+)
	20	80,0	23,0	20,0	47,0	64,0	0,561	-0208300	76,15	-0209300	(+)
	25	80,0	29,0	26,0	53,0	70,0	0,621	-0258300	77,85	-0259300	(+)
	32	90,0	35,0	32,0	59,0	76,0	0,742	-0328300	86,05	-0329300	(+)
	40	90,0	41,0	38,0	65,0	82,0	0,803	-0408300	92,75	-0409300	(+)
	50	90,0	53,0	50,0	77,0	94,0	0,963	-0508300	105,70	-0509300	(+)
	65	108,0	70,0	66,0	95,0	113,0	1,445	-0658300	142,20	-0659300	(+)
	80	116,0	85,0	81,0	112,0	133,0	2,226	-0808300	198,10	-0809300	(+)
	100	116,0	104,0	100,0	137,0	159,0	3,307	-1008300	244,70	-1009300	(+)
	125	120,0	129,0	125,0	161,0	183,0	4,500	-1258300	(+)	-1259300	(+)
	150	120,0	154,0	150,0	188,0	213,0	7,350	-1508300	(+)	-1509300	(+)

Deltaferritgehalt < 3,0% - wird in Einzelteilen geliefert  
weitere Dichtungen siehe Artikel 10117

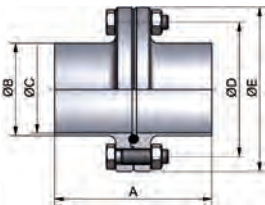
content of delta-ferrite < 3,0% - delivered in single components  
other gaskets see article 10117



HyCom- Flanschverbindung ASME DIN 11864-F  HyCom-flange connection ASME DIN 11864-F	Art.-Nr. 10160-							AISI 316L-1.4404			
	DN	A	B	C	D	E	Gew.	Art.-Nr.	Preis	Art.-Nr.	Preis
		mm	mm	mm	mm	mm	kg	Ra<0,8 EPDM	EUR	Ra<0,4 EPDM	EUR
	0,5"	80,0	12,7	9,4	37,0	54,0	0,421	-0128300	75,50	-0129300	(+)
	0,75"	80,0	19,05	15,75	42,0	59,0	0,521	-0348300	77,70	-0349300	(+)
	1"	80,0	25,4	22,1	49,0	66,0	0,601	-1008300	80,65	-1009300	(+)
	1,5"	90,0	38,1	34,8	62,0	79,0	0,762	-1128300	94,75	-1129300	(+)
	2"	90,0	50,8	47,5	75,0	92,0	0,963	-2008300	111,10	-2009300	(+)
	2,5"	108,0	63,5	60,2	89,0	107,0	1,284	-2128300	148,40	-2129300	(+)
	3"	112,0	76,2	72,9	104,0	125,0	2,126	-3008300	206,80	-3009300	(+)
	4"	116,0	101,6	97,4	135,0	157,0	3,288	-4008300	260,40	-4009300	(+)

Deltaferritgehalt < 3,0% - wird in Einzelteilen geliefert  
weitere Dichtungen siehe Artikel 10118

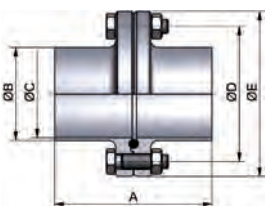
content of delta-ferrite < 3,0% - delivered in single components  
other gaskets see article 10118



HyCom- Flanschverbindung ISO DIN 11864-F  HyCom-flange connection ISO DIN 11864-F	Art.-Nr. 10161-							AISI 316L-1.4404			
	DN	A	B	C	D	E	Gew.	Art.-Nr.	Preis	Art.-Nr.	Preis
		mm	mm	mm	mm	mm	kg	Ra<0,8 EPDM	EUR	Ra<0,4 EPDM	EUR
	13,5	80,0	13,5	10,3	37,0	54,0	0,401	-0088300	77,90	-0089300	(+)
	17,2	80,0	17,2	14,0	42,0	59,0	0,481	-0108300	79,90	-0109300	(+)
	21,3	80,0	21,3	18,1	45,0	62,0	0,521	-0158300	80,90	-0159300	(+)
	26,9	80,0	26,9	23,7	52,0	69,0	0,621	-0208300	83,35	-0209300	(+)
	33,7	90,0	33,7	29,7	57,0	74,0	0,722	-0258300	84,65	-0259300	(+)
	42,4	90,0	42,4	38,4	65,0	82,0	0,823	-0328300	90,65	-0329300	(+)
	48,3	90,0	48,3	44,3	71,0	88,0	0,923	-0408300	98,75	-0409300	(+)
	60,3	108,0	60,3	56,3	85,0	103,0	1,204	-0508300	124,30	-0509300	(+)
	76,1	112,0	76,1	72,1	104,0	125,0	2,125	-0658300	177,50	-0659300	(+)
	88,9	116,0	88,9	84,3	116,0	137,0	2,326	-0808300	222,10	-0809300	(+)
	114,3	116,0	114,3	109,7	146,0	168,0	3,688	-1008300	273,70	-1009300	(+)

Deltaferritgehalt < 3,0% - wird in Einzelteilen geliefert  
weitere Dichtungen siehe Artikel 10119  
(+) Preis auf Anfrage

content of delta-ferrite < 3,0% - delivered in single components  
other gaskets see article 10119  
(+) price on inquiry



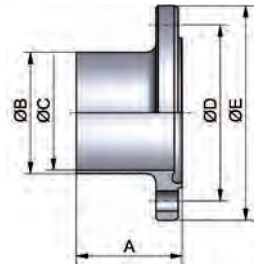
**Hygienearmaturen – HyCom-Armaturen**
**hygienic fittings – HyCom-fittings**
**Art.-Nr. 10163-**

							AISI 316L-1.4404			
DN	A	B	C	D	E	Gew.	Art.-Nr.	Preis	Art.-Nr.	Preis
	mm	mm	mm	mm	mm	kg	Ra<0,8	EUR	Ra<0,4	EUR
10	41,5	13,0	10,0	37,0	54,0	0,160	-0108000	29,10	-0109000	(+)
15	41,5	19,0	16,0	42,0	59,0	0,200	-0158000	30,20	-0159000	(+)
20	41,5	23,0	20,0	47,0	64,0	0,240	-0208000	30,90	-0209000	(+)
25	41,5	29,0	26,0	53,0	70,0	0,280	-0258000	31,50	-0259000	(+)
32	46,5	35,0	32,0	59,0	76,0	0,340	-0328000	34,50	-0329000	(+)
40	46,5	41,0	38,0	65,0	82,0	0,360	-0408000	38,90	-0409000	(+)
50	46,5	53,0	50,0	77,0	94,0	0,440	-0508000	45,20	-0509000	(+)
65	55,5	70,0	66,0	95,0	113,0	0,640	-0658000	62,80	-0659000	(+)
80	59,5	85,0	81,0	112,0	133,0	0,940	-0808000	88,00	-0809000	(+)
100	59,5	104,0	100,0	137,0	159,0	1,480	-1008000	110,50	-1009000	(+)
125	61,5	129,0	125,0	161,0	183,0	1,720	-1258000	(+)	-1259000	(+)
150	61,5	154,0	150,0	188,0	213,0	3,500	-1508000	(+)	-1509000	(+)

Deltaferritgehalt < 3,0% content of delta-ferrite < 3,0%

HyCom-Nutflansch  
DIN  
DIN 11864-NF

HyCom-flange  
groove  
DIN  
DIN 11864-NF

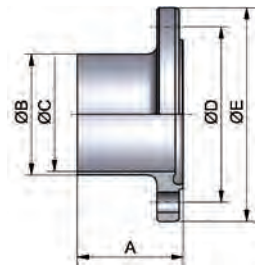

**Art.-Nr. 10164-**

							AISI 316L-1.4404			
DN	A	B	C	D	E	Gew.	Art.-Nr.	Preis	Art.-Nr.	Preis
	mm	mm	mm	mm	mm	kg	Ra<0,8	EUR	Ra<0,4	EUR
0,5"	41,5	12,7	9,4	37,0	54,0	0,160	-0128000	30,80	-0129000	(+)
0,75"	41,5	19,05	15,75	42,0	59,0	0,200	-0348000	31,90	-0349000	(+)
1"	41,5	25,4	22,1	49,0	66,0	0,260	-1008000	32,90	-1009000	(+)
1,5"	46,5	38,1	34,8	62,0	79,0	0,340	-1128000	39,90	-1129000	(+)
2"	46,5	50,8	47,5	75,0	92,0	0,440	-2008000	47,90	-2009000	(+)
2,5"	55,5	63,5	60,2	89,0	107,0	0,560	-2128000	65,90	-2129000	(+)
3"	57,5	76,2	72,9	104,0	125,0	0,900	-3008000	92,50	-3009000	(+)
4"	59,5	101,6	97,4	135,0	157,0	1,480	-4008000	118,50	-4009000	(+)

Deltaferritgehalt < 3,0% content of delta-ferrite < 3,0%

HyCom-Nutflansch  
ASME  
DIN 11864-NF

HyCom-flange groove  
ASME  
DIN 11864-NF


**Art.-Nr. 10165-**

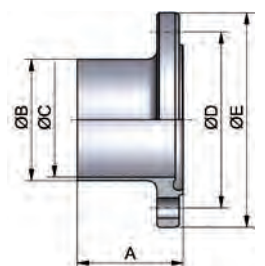
							AISI 316L-1.4404			
DN	A	B	C	D	E	Gew.	Art.-Nr.	Preis	Art.-Nr.	Preis
	mm	mm	mm	mm	mm	kg	Ra<0,8	EUR	Ra<0,4	EUR
13,5	41,5	13,5	10,3	37,0	54,0	0,160	-0088000	32,00	-0089000	(+)
17,2	41,5	17,2	14,0	42,0	59,0	0,200	-0108000	33,00	-0109000	(+)
21,3	41,5	21,3	18,1	45,0	62,0	0,220	-0158000	33,50	-0159000	(+)
26,9	41,5	26,9	23,7	52,0	69,0	0,260	-0208000	34,50	-0209000	(+)
33,7	46,5	33,7	29,7	57,0	74,0	0,320	-0258000	34,90	-0259000	(+)
42,4	46,5	42,4	38,4	65,0	82,0	0,360	-0328000	36,80	-0329000	(+)
48,3	46,5	48,3	44,3	71,0	88,0	0,420	-0408000	41,90	-0409000	(+)
60,3	55,5	60,3	56,3	85,0	103,0	0,560	-0508000	54,50	-0509000	(+)
76,1	57,5	76,1	72,1	104,0	125,0	0,900	-0658000	79,80	-0659000	(+)
88,9	59,5	88,9	84,3	116,0	137,0	1,000	-0808000	99,50	-0809000	(+)
114,3	59,5	114,3	109,7	146,0	168,0	1,660	-1008000	124,80	-1009000	(+)

Deltaferritgehalt < 3,0% content of delta-ferrite < 3,0%

(+) Preis auf Anfrage (+) price on inquiry

HyCom-Nutflansch  
ISO  
DIN 11864-NF

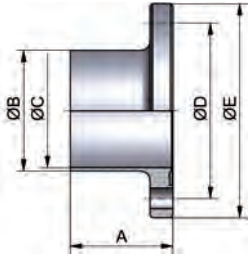
HyCom-flange  
groove  
ISO  
DIN 11864-NF



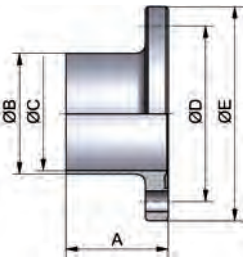
## Hygienearmaturen – HyCom-Armaturen

## hygienic fittings – HyCom-fittings

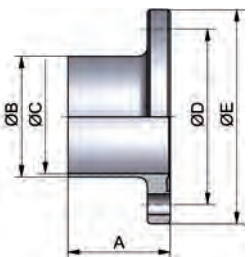
HyCom-Bundflansch DIN DIN 11864-BF	Art.-Nr. 10166-							AISI 316L-1.4404				
	DN	A	B	C	D	E	Gew.	Art.-Nr. Ra<0,8	Preis EUR	Art.-Nr. Ra<0,4	Preis EUR	
	10	40,0	13,0	10,0	37,0	54,0	0,160	-0108000	29,10	-0109000	(+)	
HyCom-flange collar DIN DIN 11864-BF	15	40,0	19,0	16,0	42,0	59,0	0,200	-0158000	30,20	-0159000	(+)	
	20	40,0	23,0	20,0	47,0	64,0	0,240	-0208000	30,90	-0209000	(+)	
	25	40,0	29,0	26,0	53,0	70,0	0,260	-0258000	31,50	-0259000	(+)	
	32	45,0	35,0	32,0	59,0	76,0	0,320	-0328000	34,50	-0329000	(+)	
	40	45,0	41,0	38,0	65,0	82,0	0,360	-0408000	38,90	-0409000	(+)	
	50	45,0	53,0	50,0	77,0	94,0	0,440	-0508000	45,20	-0509000	(+)	
	65	54,0	70,0	66,0	95,0	113,0	0,640	-0658000	62,80	-0659000	(+)	
	80	58,0	85,0	81,0	112,0	133,0	0,960	-0808000	88,00	-0809000	(+)	
	100	58,0	104,0	100,0	137,0	159,0	1,480	-1008000	110,50	-1009000	(+)	
	125	60,0	129,0	125,0	161,0	183,0	1,720	-1258000	(+)	-1259000	(+)	
150	60,0	154,0	150,0	188,0	213,0	3,500	-1508000	(+)	-1509000	(+)		
							Deltaferritgehalt < 3,0%				content of delta-ferrite < 3,0%	



HyCom-Bundflansch ASME DIN 11864-BF	Art.-Nr. 10167-							AISI 316L-1.4404				
	DN	A	B	C	D	E	Gew.	Art.-Nr. Ra<0,8	Preis EUR	Art.-Nr. Ra<0,4	Preis EUR	
	0,5"	40,0	12,7	9,4	37,0	54,0	0,200	-0128000	30,80	-0129000	(+)	
HyCom-flange collar ASME DIN 11864-BF	0,75"	40,0	19,05	15,75	42,0	59,0	0,240	-0348000	31,90	-0349000	(+)	
	1"	40,0	25,4	22,1	49,0	66,0	0,260	-1008000	32,90	-1009000	(+)	
	1,5"	45,0	38,1	34,8	62,0	79,0	0,340	-1128000	39,90	-1129000	(+)	
	2"	45,0	50,8	47,5	75,0	92,0	0,440	-2008000	47,90	-2009000	(+)	
	2,5"	54,0	63,5	60,2	89,0	107,0	0,560	-2128000	65,90	-2129000	(+)	
	3"	56,0	76,2	72,9	104,0	125,0	0,900	-3008000	92,50	-3009000	(+)	
	4"	58,0	101,6	97,4	135,0	157,0	1,480	-4008000	118,50	-4009000	(+)	
								Deltaferritgehalt < 3,0%				content of delta-ferrite < 3,0%



HyCom-Bundflansch ISO DIN 11864-BF	Art.-Nr. 10168-							AISI 316L-1.4404				
	DN	A	B	C	D	E	Gew.	Art.-Nr. Ra<0,8	Preis EUR	Art.-Nr. Ra<0,4	Preis EUR	
	13,5	40,0	13,5	10,3	37,0	54,0	0,160	-0088000	32,00	-0089000	(+)	
HyCom-flange collar ISO DIN 11864-BF	17,2	40,0	17,2	14,0	42,0	59,0	0,200	-0108000	33,00	-0109000	(+)	
	21,3	40,0	21,3	18,1	45,0	62,0	0,220	-0158000	33,50	-0159000	(+)	
	26,9	40,0	26,9	23,7	52,0	69,0	0,260	-0208000	34,50	-0209000	(+)	
	33,7	45,0	33,7	29,7	57,0	74,0	0,320	-0258000	34,90	-0259000	(+)	
	42,4	45,0	42,4	38,4	65,0	82,0	0,380	-0328000	36,80	-0329000	(+)	
	48,3	45,0	48,3	44,3	71,0	88,0	0,420	-0408000	41,90	-0409000	(+)	
	60,3	54,0	60,3	56,3	85,0	103,0	0,560	-0508000	54,50	-0509000	(+)	
	76,1	56,0	76,1	72,1	104,0	125,0	0,900	-0658000	79,80	-0659000	(+)	
	88,9	58,0	88,9	84,3	116,0	137,0	1,000	-0808000	99,50	-0809000	(+)	
	114,3	58,0	114,3	109,7	146,0	168,0	1,680	-1008000	124,80	-1009000	(+)	
							Deltaferritgehalt < 3,0%				content of delta-ferrite < 3,0%	
							(+) Preis auf Anfrage				(+) price on inquiry	

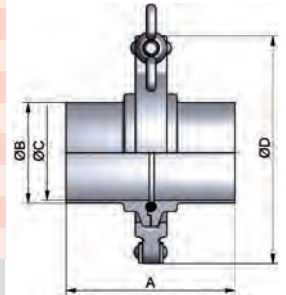


**Hygienearmaturen – HyCom-Armaturen**
**hygienic fittings – HyCom-fittings**
**Art.-Nr. 10183-**

							AISI 316L-1.4404			
DN	A	B	C	D	E	Gew.	Art.-Nr.	Preis	Art.-Nr.	Preis
	mm	mm	mm	mm	mm	kg	Ra<0,8 EPDM	EUR	Ra<0,4 EPDM	EUR
10	76,0	13,0	10,0	43,0		0,296	-0108300	87,10	-0109300	(+)
15	76,0	19,0	16,0	43,0		0,296	-0158300	87,10	-0159300	(+)
20	76,0	23,0	20,0	57,0		0,476	-0208300	82,10	-0209300	(+)
25	77,0	29,0	26,0	57,0		0,462	-0258300	89,80	-0259300	(+)
32	88,0	35,0	32,0	57,0		0,462	-0328300	93,00	-0329300	(+)
40	88,0	41,0	38,0	73,0		0,623	-0408300	101,10	-0409300	(+)
50	89,0	53,0	50,0	89,0		0,783	-0508300	120,25	-0509300	(+)
65	113,0	70,0	66,0	99,0		1,085	-0658300	155,80	-0659300	(+)
80	117,0	85,0	81,0	118,0		1,416	-0808300	195,00	-0809300	(+)
100	120,0	104,0	100,0	145,0		2,047	-1008300	270,40	-1009300	(+)

 Deltaferritgehalt < 3,0% - wird in Einzelteilen geliefert  
 weitere Dichtungen siehe Artikel 10117

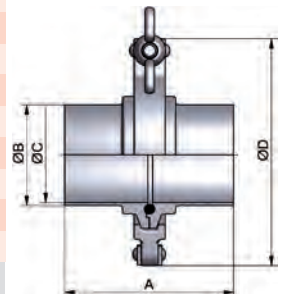
 content of delta-ferrite < 3,0% - delivered in single components  
 other gaskets see article 10117

**HyCom-  
Klemmverbindung  
DIN  
DIN 11864-K**
**HyCom-  
clamp connection  
DIN  
DIN 11864-K**

**Art.-Nr. 10184-**

							AISI 316L-1.4404			
DN	A	B	C	D	E	Gew.	Art.-Nr.	Preis	Art.-Nr.	Preis
	mm	mm	mm	mm	mm	kg	Ra<0,8 EPDM	EUR	Ra<0,4 EPDM	EUR
0,5"	76,0	12,70	9,40	43,0		0,296	-0128300	90,70	-0129300	(+)
0,75"	76,0	19,05	15,75	43,0		0,296	-0348300	92,90	-0349300	(+)
1"	77,0	25,4	22,1	57,0		0,501	-1008300	93,80	-1009300	(+)
1,5"	88,0	38,1	34,8	73,0		0,742	-1128300	107,10	-1129300	(+)
2"	89,0	50,8	47,5	89,0		0,844	-2008300	124,35	-2009300	(+)
2,5"	115,0	63,5	60,2	99,0		1,184	-2128300	163,00	-2129300	(+)
3"	117,0	76,2	72,9	118,0		1,506	-3008300	195,60	-3009300	(+)
4"	119,0	101,6	97,4	145,0		2,188	-4008300	283,00	-4009300	(+)

 Deltaferritgehalt < 3,0% - wird in Einzelteilen geliefert  
 weitere Dichtungen siehe Artikel 10118

 content of delta-ferrite < 3,0% - delivered in single components  
 other gaskets see article 10118

**HyCom-  
Klemmverbindung  
ASME  
DIN 11864-K**
**HyCom-  
clamp connection  
ASME  
DIN 11864-K**

**Art.-Nr. 10185-**

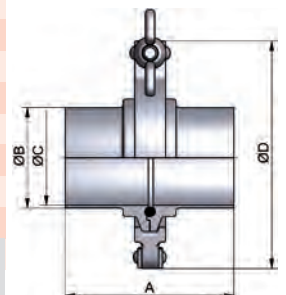
							AISI 316L-1.4404			
DN	A	B	C	D	E	Gew.	Art.-Nr.	Preis	Art.-Nr.	Preis
	mm	mm	mm	mm	mm	kg	Ra<0,8 EPDM	EUR	Ra<0,4 EPDM	EUR
13,5	76,0	13,5	10,3	43,0		0,296	-0088300	90,70	-0089300	(+)
17,2	76,0	17,2	14,0	43,0		0,296	-0108300	90,70	-0109300	(+)
21,3	78,0	21,3	18,1	43,0		0,276	-0158300	90,70	-0159300	(+)
26,9	78,0	26,9	23,7	57,0		0,541	-0208300	95,50	-0209300	(+)
33,7	88,0	33,7	29,7	57,0		0,502	-0258300	99,40	-0259300	(+)
42,4	88,0	42,4	38,4	73,0		0,703	-0328300	111,20	-0329300	(+)
48,3	90,0	48,3	44,3	73,0		0,703	-0408300	111,30	-0409300	(+)
60,3	114,0	60,3	56,3	99,0		1,284	-0508300	160,10	-0509300	(+)
76,1	117,0	76,1	72,1	118,0		1,585	-0658300	198,70	-0659300	(+)
88,9	122,0	88,9	84,3	127,0		1,956	-0808300	226,80	-0809300	(+)
114,3	130,0	114,3	109,7	155,0		2,528	-1008300	347,20	-1009300	(+)

 Deltaferritgehalt < 3,0% - wird in Einzelteilen geliefert  
 weitere Dichtungen siehe Artikel 10119

 content of delta-ferrite < 3,0% - delivered in single components  
 other gaskets see article 10119

(+) Preis auf Anfrage

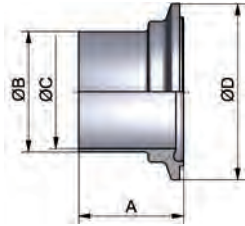
(+) price on inquiry

**HyCom-  
Klemmverbindung  
ISO  
DIN 11864-K**
**HyCom-  
clamp connection  
ISO  
DIN 11864-K**


## Hygienearmaturen – HyCom-Armaturen

## hygienic fittings – HyCom-fittings

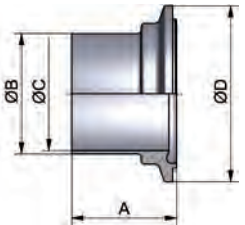
HyCom-Nutklemmstutzen DIN	Art.-Nr. 10186-							AISI 316L-1.4404			
	DN	A	B	C	D	E	Gew.	Art.-Nr. Ra<0,8	Preis EUR	Art.-Nr. Ra<0,4	Preis EUR
DIN 11864-NKS	10	39,5	13,0	10,0	34,0		0,060	-0108000	16,80	-0109000	(+)
	15	39,5	19,0	16,0	34,0		0,060	-0158000	16,80	-0159000	(+)
HyCom-ferrule groove DIN	20	39,5	23,0	20,0	50,5		0,160	-0208000	16,80	-0209000	(+)
DIN 11864-NKS	25	40,0	29,0	26,0	50,5		0,120	-0258000	20,40	-0259000	(+)
	32	45,5	35,0	32,0	50,5		0,120	-0328000	20,90	-0329000	(+)
	40	45,5	41,0	38,0	64,0		0,200	-0408000	23,40	-0409000	(+)
	50	46,0	53,0	50,0	77,5		0,240	-0508000	32,05	-0509000	(+)
	65	58,0	70,0	66,0	91,0		0,380	-0658000	48,80	-0659000	(+)
	80	60,0	85,0	81,0	106,0		0,500	-0808000	66,40	-0809000	(+)
	100	61,5	104,0	100,0	130,0		0,740	-1008000	84,20	-1009000	(+)



Deltaferritgehalt < 3,0%

content of delta-ferrite < 3,0%

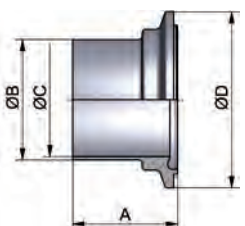
HyCom-Nutklemmstutzen ASME	Art.-Nr. 10187-							AISI 316L-1.4404			
	DN	A	B	C	D	E	Gew.	Art.-Nr. Ra<0,8	Preis EUR	Art.-Nr. Ra<0,4	Preis EUR
DIN 11864-NKS	0,5"	39,5	12,7	9,4	34,0		0,060	-0128000	18,60	-0129000	(+)
	0,75"	39,5	19,05	15,75	34,0		0,060	-0348000	19,70	-0349000	(+)
HyCom-ferrule groove ASME	1"	40,0	25,4	22,1	50,5		0,140	-1008000	22,40	-1009000	(+)
DIN 11864-NKS	1,5"	45,5	38,1	34,8	64,0		0,220	-1128000	26,40	-1129000	(+)
	2"	46,0	50,8	47,5	77,5		0,260	-2008000	34,10	-2009000	(+)
	2,5"	59,0	63,5	60,2	91,0		0,420	-2128000	52,40	-2129000	(+)
	3"	60,0	76,2	72,9	106,0		0,580	-3008000	66,70	-3009000	(+)
	4"	61,0	101,6	97,4	130,0		0,740	-4008000	90,50	-4009000	(+)



Deltaferritgehalt < 3,0%

content of delta-ferrite < 3,0%

HyCom-Nutklemmstutzen ISO	Art.-Nr. 10188-							AISI 316L-1.4404			
	DN	A	B	C	D	E	Gew.	Art.-Nr. Ra<0,8	Preis EUR	Art.-Nr. Ra<0,4	Preis EUR
DIN 11864-NKS	13,5	39,5	13,5	10,3	34,0		0,060	-0088000	18,60	-0089000	(+)
	17,2	39,5	17,2	14,0	34,0		0,060	-0108000	18,60	-0109000	(+)
HyCom-ferrule groove ISO	21,3	40,5	21,3	18,1	34,0		0,060	-0158000	18,60	-0159000	(+)
DIN 11864-NKS	26,9	40,5	26,9	23,7	50,5		0,160	-0208000	23,50	-0209000	(+)
	33,7	45,5	33,7	29,7	50,5		0,140	-0258000	25,20	-0259000	(+)
	42,4	45,5	42,4	38,4	64,0		0,200	-0328000	27,40	-0329000	(+)
	48,3	46,5	48,3	44,3	64,0		0,200	-0408000	28,50	-0409000	(+)
	60,3	58,5	60,3	56,3	91,0		0,480	-0508000	51,30	-0509000	(+)
	76,1	60,0	76,1	72,1	106,0		0,620	-0658000	70,20	-0659000	(+)
	88,9	62,5	88,9	84,3	119,0		0,760	-0808000	81,40	-0809000	(+)
	114,3	66,5	114,3	109,7	144,4		0,980	-1008000	106,20	-1009000	(+)



Deltaferritgehalt < 3,0%

content of delta-ferrite < 3,0%

(+) Preis auf Anfrage

(+) price on inquiry





## Hygienearmaturen – HyCom-Armaturen

## hygienic fittings – HyCom-fittings

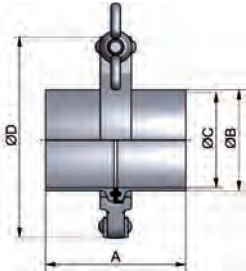
**HyCom-TC-  
Verbindung DIN  
DIN 32676-A-KL**

**Art.-Nr. 10150-**

DN	A	B	C	D	E	Gew.
mm	mm	mm	mm	mm	mm	kg
10	60,0	13,0	10,0	43,0	34,0	0,256
15	60,0	19,0	16,0	43,0	34,0	0,256
20	60,0	23,0	20,0	43,0	34,0	0,425
25	74,0	29,0	26,0	57,0	50,5	0,425
32	74,0	35,0	32,0	57,0	50,5	0,384
40	74,0	41,0	38,0	57,0	50,5	0,383
50	74,0	53,0	50,0	73,0	64,0	0,543
65	98,0	70,0	66,0	99,0	91,0	0,905
80	98,0	85,0	81,0	118,0	106,0	0,996
100	98,0	104,0	100,0	127,0	119,0	1,347

AISI 316L-1.4404

Art.-Nr.	Preis	Art.-Nr.	Preis
Ra<0,8 EPDM	EUR	Ra<0,4 EPDM	EUR
-0108300	85,50	-0109300	(+)
-0158300	85,50	-0159300	(+)
-0208300	85,50	-0209300	(+)
-0258300	84,95	-0259300	(+)
-0328300	89,05	-0329300	(+)
-0408300	90,95	-0409300	(+)
-0508300	113,85	-0509300	(+)
-0658300	151,05	-0659300	(+)
-0808300	186,70	-0809300	(+)
-1008300	224,55	-1009300	(+)



Deltaferritgehalt < 3,0% - wird in Einzelteilen geliefert

E: für Flanschdurchmesser - weitere Dichtungen siehe Artikel 18900

content of delta-ferrite < 3,0% - delivered in single components

E: for diameter of flange - other gaskets see article 18900

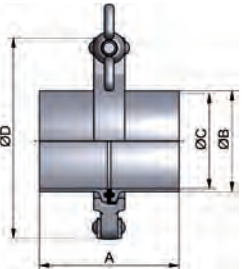
**HyCom-TC-  
Verbindung ASME  
DIN 32676-C-KL**

**Art.-Nr. 10151-**

DN	A	B	C	D	E	Gew.
mm	mm	mm	mm	mm	mm	kg
0,5"	60,0	12,7	9,4	33,0	25,0	0,175
0,75"	60,0	19,05	15,75	33,0	25,0	0,231
1"	74,0	25,4	22,1	57,0	50,5	0,421
1,5"	74,0	38,1	34,8	57,0	50,5	0,422
2"	74,0	50,8	47,5	73,0	64,0	0,623
2,5"	74,0	63,5	60,2	89,0	77,5	0,724
3"	98,0	76,2	72,9	99,0	91,0	0,612
4"	98,0	101,6	97,4	127,0	119,0	1,468

AISI 316L-1.4404

Art.-Nr.	Preis	Art.-Nr.	Preis
Ra<0,8 EPDM	EUR	Ra<0,4 EPDM	EUR
-0128300	93,90	-0129300	(+)
-0348300	96,50	-0349300	(+)
-1008300	93,95	-1009300	(+)
-1128300	101,95	-1129300	(+)
-2008300	120,95	-2009300	(+)
-2128300	157,10	-2129300	(+)
-3008300	180,90	-3009300	(+)
-4008300	226,35	-4009300	(+)



Deltaferritgehalt < 3,0% - wird in Einzelteilen geliefert

E: für Flanschdurchmesser - weitere Dichtungen siehe Artikel 18901

content of delta-ferrite < 3,0% - delivered in single components

E: for diameter of flange - other gaskets see article 18901

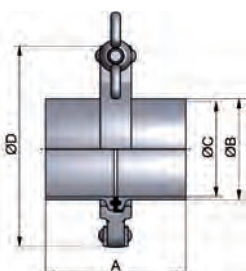
**HyCom-TC-  
Verbindung ISO  
DIN 32676-B-KL**

**Art.-Nr. 10152-**

DN	A	B	C	D	E	Gew.
mm	mm	mm	mm	mm	mm	kg
13,5	60,0	13,5	10,3	33,0	25,0	0,256
17,2	60,0	17,2	14,0	33,0	25,0	0,256
21,3	74,0	21,3	18,1	57,0	50,5	0,256
26,9	74,0	26,9	23,7	57,0	50,5	0,256
33,7	74,0	33,7	29,7	57,0	50,5	0,425
42,4	74,0	42,4	38,4	73,0	64,0	0,424
48,3	74,0	48,3	44,3	73,0	64,0	0,583
60,3	74,0	60,3	56,3	89,0	77,5	0,684
76,1	98,0	76,1	72,1	99,0	91,0	0,905
88,9	98,0	88,9	84,3	118,0	106,0	1,096
114,3	98,0	114,3	109,7	145,0	130,0	1,408
13,5 (34)*	60,0	13,5	10,3	43,0	34,0	0,256
17,2 (34)*	60,0	17,2	14,0	43,0	34,0	0,256
21,3 (34)*	74,0	21,3	18,1	43,0	34,0	0,256
42,4 (50,5)*	74,0	42,4	38,4	57,0	50,5	0,424

AISI 316L-1.4404

Art.-Nr.	Preis	Art.-Nr.	Preis
Ra<0,8 EPDM	EUR	Ra<0,4 EPDM	EUR
-0088300100	100,70	-0089300100	(+)
-0108300100	103,70	-0109300100	(+)
-0158300100	99,50	-0159300100	(+)
-0208300	97,55	-0209300	(+)
-0258300	103,95	-0259300	(+)
-0328300100	113,15	-0329300100	(+)
-0408300	122,65	-0409300	(+)
-0508300	131,85	-0509300	(+)
-0658300	175,40	-0659300	(+)
-0808300	213,60	-0809300	(+)
-1008300	339,30	-1009300	(+)
-0088300	101,00	-0089300	(+)
-0108300	104,00	-0109300	(+)
-0158300	105,00	-0159300	(+)
-0328300	107,95	-0329300	(+)



Deltaferritgehalt < 3,0% - wird in Einzelteilen geliefert

E: für Flanschdurchmesser - weitere Dichtungen siehe Artikel 189

\* keine Abmessung gemäß DIN 32676

(+) Preis auf Anfrage

content of delta-ferrite < 3,0% - delivered in single components

E: for diameter of flange - other gaskets see article 189

\* no dimensions according to DIN 32676

(+) price on inquiry



## Hygienearmaturen – HyCom-Armaturen

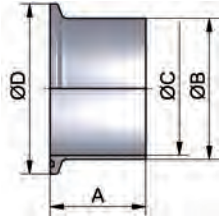
## hygienic fittings – HyCom-fittings

HyCom-TC-Stutzen  
ASME-BPE

Art.-Nr. 10154-

AISI 316L-1.4404

HyCom-TC-liner  
ASME -BPE



DN	A	B	C	D	E	Gew.	Art.-Nr.	Preis	Art.-Nr.	Preis
	mm	mm	mm	mm	mm	kg	Ra<0,8	EUR	Ra<0,4	EUR
0,5"	44,5	12,7	9,4	25,0		0,010	-0128000	(+)	-0129000	(+)
0,75"	44,5	19,05	15,75	25,0		0,040	-0348000	(+)	-0349000	(+)
1"	44,5	25,4	22,1	50,5		0,100	-1008000	(+)	-1009000	(+)
1,5"	44,5	38,1	34,8	50,5		0,100	-1128000	(+)	-1129000	(+)
2"	57,2	50,8	47,5	64,0		0,160	-2008000	(+)	-2009000	(+)
2,5"	57,2	63,5	60,2	77,5		0,200	-2128000	(+)	-2129000	(+)
3"	57,2	76,2	72,9	91,0		0,280	-3008000	(+)	-3009000	(+)
4"	57,2	101,6	97,4	119,0		0,440	-4008000	(+)	-4009000	(+)

Deltaferritgehalt < 3,0%

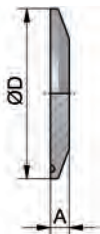
content of delta-ferrite < 3,0%

Blindclampsutzen  
(TC)

Art.-Nr. 1860-

AISI 316L-1.4404

blind ferrule  
(TC)



DN	A	B	C	D	E	Gew.	Art.-Nr.	Preis
	mm	mm	mm	mm	mm	kg	Ra<0,8	EUR
6-8/0,25-0,75"/10,2-17,2	7,0			25,0		0,015	-10123	12,90
10-20	7,0			34,0		0,032	-00203	12,90
25-40/1-1,5"/21,3-33,7	7,0			50,5		0,070	-11123	11,35
50/2"/42,4-48,3	7,0			64,0		0,100	-12003	14,55
2,5"/60,3	7,0			77,5		0,200	-12123	17,35
65/3"/76,1	7,0			91,0		0,240	-13003	24,55
80/88,9	7,0			106,0		0,470	-00803	30,15
100/4"	8,0			119,0		0,540	-14003	38,45
114,3	8,0			130,0		0,650	-14123	71,20

(+) Preis auf Anfrage

(+) price on inquiry

**Hygienearmaturen – HyCom-Armaturen**
**hygienic fittings – HyCom-fittings**
**Art.-Nr. 18900-**

DN	A mm	B mm	C mm	D mm	E mm	Gew. kg	Art.-Nr. Preis		Art.-Nr. Preis		Art.-Nr. Preis		Art.-Nr. Preis	
							EPDM	EUR	FKM	EUR	PTFE	EUR	FKM/PTFE	EUR
10	10,2	34,0				0,003	-0100300	4,10	-0100400	12,25	-0100500	20,20	-0100900	(+)
15	16,2	34,0				0,002	-0150300	4,10	-0150400	12,25	-0150500	20,20	-0150900	(+)
20	20,2	34,0				0,002	-0200300	4,10	-0200400	12,25	-0200500	20,20	-0200900	(+)
25	26,2	50,5				0,005	-0250300	1,80	-0250400	12,90	-0250500	21,00	-0250900	(+)
32	32,2	50,5				0,004	-0320300	4,90	-0320400	13,15	-0320500	23,25	-0320900	(+)
40	38,2	50,5				0,004	-0400300	1,80	-0400400	13,70	-0400500	21,00	-0400900	(+)
50	50,2	64,0				0,005	-0500300	2,20	-0500400	14,55	-0500500	23,30	-0500900	(+)
65	66,2	91,0				0,012	-0650300	3,05	-0650400	17,15	-0650500	36,35	-0650900	(+)
80	81,2	106,0				0,012	-0800300	3,50	-0800400	21,40	-0800500	43,15	-0800900	(+)
100	100,2	119,0				0,011	-1000300	4,95	-1000400	23,25	-1000500	48,85	-1000900	(+)

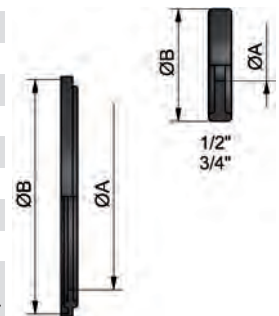
**Clamp-Dichtung TC  
DIN**
**TC clamp gasket  
DIN**


FKM/PTFE: FKM-Kern/PTFE-ummantelt

FKM/PTFE: FKM core with PTFE layer

**Rabatt gem. Kapitel Clampverbindungen**
**discount acc. chapter clamp pipe connections**
**Art.-Nr. 18901-**

DN	A mm	B mm	C mm	D mm	E mm	Gew. kg	Art.-Nr. Preis		Art.-Nr. Preis		Art.-Nr. Preis		Art.-Nr. Preis	
							EPDM	EUR	FKM	EUR	PTFE	EUR	FKM/PTFE	EUR
0,5"	10,6	21,8				0,003	-0120300	5,20	-0120400	7,50	-0120500	10,50	-0120900	(+)
0,75"	16,0	21,8				0,004	-0340300	5,20	-0340400	7,50	-0340500	10,50	-0340900	(+)
1"	23,1	50,5				0,005	-1000300	1,80	-1000400	12,90	-1000500	21,00	-1000900	(+)
1,5"	35,3	50,5				0,004	-1120300	1,80	-1120400	13,70	-1120500	21,00	-1120900	(+)
2"	48,0	64,0				0,005	-2000300	2,20	-2000400	14,55	-2000500	23,30	-2000900	(+)
2,5"	60,7	77,5				0,007	-2120300	3,05	-2120400	17,15	-2120500	32,95	-2120900	(+)
3"	72,3	91,0				0,009	-3000300	3,50	-3000400	21,40	-3000500	36,35	-3000900	(+)
4"	97,8	119,0				0,012	-4000300	4,95	-4000400	23,25	-4000500	48,85	-4000900	(+)

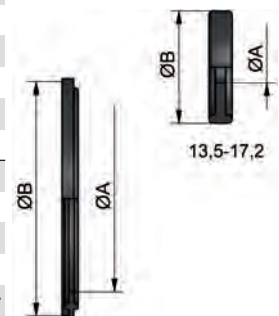
**Clamp-Dichtung TC  
ASME**
**TC clamp gasket  
ASME**


FKM/PTFE: FKM-Kern/PTFE-ummantelt

FKM/PTFE: FKM core with PTFE layer

**Rabatt gem. Kapitel Clampverbindungen**
**discount acc. chapter clamp pipe connections**
**Art.-Nr. 189-**

DN	A mm	B mm	C mm	D mm	Gew. kg	Art.-Nr. Preis		Art.-Nr. Preis		Art.-Nr. Preis		Art.-Nr. Preis	
						EPDM	EUR	FKM	EUR	PTFE	EUR	FKM/PTFE	EUR
13,5	10,5	21,8			0,003	-180080300	(+)	-180080400	(+)	-180080500	(+)	-180080900	(+)
17,2	14,2	21,8			0,003	-180100300	(+)	-180100400	(+)	-180100500	(+)	-180100900	(+)
21,3	18,3	50,5			0,002	-180150300	(+)	-180150400	(+)	-180150500	(+)	-180150900	(+)
26,9	23,9	50,5			0,002	-080200300	4,80	-080200400	14,50	-080200500	20,70	-080200900	(+)
33,7	29,9	50,5			0,005	-080250300	3,00	-080250400	8,10	-080250500	21,45	-080250900	(+)
42,4	38,6	64,0			0,004	-180320300	(+)	-180320400	(+)	-180320500	(+)	-180320900	(+)
48,3	44,5	64,0			0,004	-080400300	3,70	-080400400	23,65	-080400500	23,65	-080400900	(+)
60,3	56,5	77,5			0,005	-080500300	4,20	-080500400	13,70	-080500500	33,75	-080500900	(+)
76,1	72,3	91,0			0,012	-080650300	5,60	-080650400	16,80	-080650500	37,95	-080650900	(+)
88,9	85,1	106,0			0,012	-080800300	6,00	-080800400	18,90	-080800500	44,35	-080800900	(+)
114,3	110,5	130,0			0,011	-081000300	20,60	-081000400	38,70	-081000500	60,70	-081000900	(+)
13,5 (34)*	10,5	34,0			0,003	-080080300	4,80	-080080400	14,50	-080080500	20,70	-080080900	(+)
17,2 (34)*	14,2	34,0			0,003	-080100300	4,80	-080100400	14,50	-080100500	20,70	-080100900	(+)
21,3 (34)*	18,3	34,0			0,002	-080150300	4,80	-080150400	14,50	-080150500	20,70	-080150900	(+)
42,4 (50,5)*	38,6	50,5			0,004	-080320300	3,00	-080320400	8,10	-080320500	21,45	-080320900	(+)

**Clamp-Dichtung TC  
ISO**
**TC clamp gasket  
ISO**


FKM/PTFE: FKM-Kern/PTFE-ummantelt

FKM/PTFE: FKM core with PTFE layer

\* keine Abmessung gemäß DIN 32676 - (+) Preis auf Anfrage

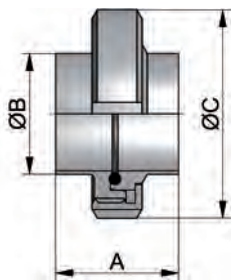
\* no dimensions according to DIN 32676 - (+) price on inquiry

**Rabatt gem. Kapitel Clampverbindungen**
**discount acc. chapter clamp pipe connections**

## Hygienearmaturen – HyCom-Armaturen

## hygienic fittings – HyCom-fittings

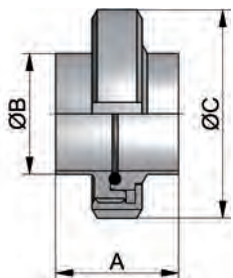
HyCom-Verschraubung DIN	Art-Nr. 10131-							AISI 304/304L-1.4301/1.4307		AISI 316L-1.4404*	
	DN	A	B	C	D	E	Gew.	Art.-Nr.	Preis	Art.-Nr.	Preis
		mm	mm	mm	mm	mm	kg	Ra<0,8 EPDM	EUR	Ra<0,8 EPDM	EUR
DIN 11853-V	10	32,0	13,0	38,0			0,090	-0101300	(+)	-0103300	42,05
	15	32,0	19,0	44,0			0,141	-0151300	(+)	-0153300	44,60
HyCom-union DIN	20	34,0	23,0	54,0			0,231	-0201300	(+)	-0203300	48,70
DIN 11853-V	25	42,0	29,0	63,0			0,381	-0251300	43,40	-0253300	45,20
	32	48,0	35,0	70,0			0,442	-0321300	48,50	-0323300	50,50
	40	50,0	41,0	78,0			0,573	-0401300	46,40	-0403300	49,10
	50	54,0	53,0	92,0			0,733	-0501300	54,15	-0503300	56,55
	65	62,0	70,0	112,0			1,300	-0651300	73,60	-0653300	79,00
	80	72,0	85,0	127,0			1,750	-0801300	102,50	-0803300	111,40
	100	86,0	104,0	148,0			2,277	-1001300	141,25	-1003300	154,55



\*Deltaferrit < 3,0% - wird in Einzelteilen geliefert  
weitere Dichtungen siehe Artikel 10117

\*content of delta-ferrite < 3,0% - delivered in single components  
other gaskets see article 10117

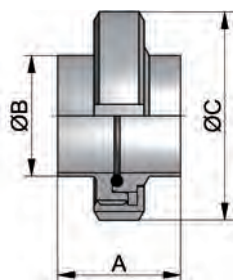
HyCom-Verschraubung ASME	Art-Nr. 10132-							AISI 304/304L-1.4301/1.4307		AISI 316L-1.4404*	
	DN	A	B	C	D	E	Gew.	Art.-Nr.	Preis	Art.-Nr.	Preis
		mm	mm	mm	mm	mm	kg	Ra<0,8 EPDM	EUR	Ra<0,8 EPDM	EUR
DIN 11853-V	0,5"	32,0	12,7	38,0			0,090	-0121300	44,00	-0123300	44,95
	0,75"	32,0	19,05	44,0			0,141	-0341300	47,85	-0343300	48,90
HyCom-union ASME	1"	42,0	25,4	63,0			0,381	-1001300	48,90	-1003300	49,90
DIN 11853-V	1,5"	50,0	38,1	78,0			0,573	-1121300	53,50	-1123300	54,80
	2"	54,0	50,8	92,0			0,733	-2001300	64,55	-2003300	66,05
	2,5"	62,0	63,5	112,0			1,300	-2121300	86,30	-2123300	89,70
	3"	72,0	76,2	127,0			1,750	-3001300	132,80	-3003300	135,20
	4"	86,0	101,6	148,0			2,277	-4001300	157,85	-4003300	165,15



\*Deltaferrit < 3,0% - wird in Einzelteilen geliefert  
weitere Dichtungen siehe Artikel 10118

\*content of delta-ferrite < 3,0% - delivered in single components  
other gaskets see article 10118

HyCom-Verschraubung ISO	Art-Nr. 10133-							AISI 304/304L-1.4301/1.4307		AISI 316L-1.4404*	
	DN	A	B	C	D	E	Gew.	Art.-Nr.	Preis	Art.-Nr.	Preis
		mm	mm	mm	mm	mm	kg	Ra<0,8 EPDM	EUR	Ra<0,8 EPDM	EUR
DIN 11853-V	13,5	32,0	13,5	38,0			0,090	-0081300	(+)	-0083300	(+)
	17,2	32,0	17,2	44,0			0,141	-0101300	(+)	-0103300	(+)
HyCom-union ISO	21,3	34,0	21,3	54,0			0,231	-0151300	(+)	-0153300	(+)
DIN 11853-V	26,9	42,0	26,9	63,0			0,381	-0201300	(+)	-0203300	(+)
	33,7	48,0	33,7	70,0			0,442	-0251300	(+)	-0253300	(+)
	42,4	50,0	42,4	78,0			0,573	-0321300	(+)	-0323300	(+)
	48,3	54,0	48,3	92,0			0,733	-0401300	(+)	-0403300	(+)
	60,3	62,0	60,3	112,0			1,300	-0501300	(+)	-0503300	(+)
	76,1	72,0	76,1	127,0			1,750	-0651300	(+)	-0653300	(+)
	88,9	86,0	88,9	148,0			2,277	-0801300	(+)	-0803300	(+)



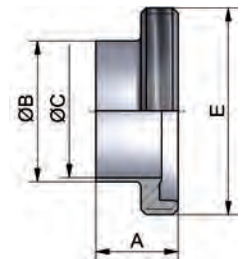
\*Deltaferrit < 3,0% - wird in Einzelteilen geliefert  
weitere Dichtungen siehe Artikel 10119  
(+) Preis auf Anfrage

\*content of delta-ferrite < 3,0% - delivered in single components  
other gaskets see article 10119  
(+) price on inquiry

**Hygienearmaturen – HyCom-Armaturen**
**hygienic fittings – HyCom-fittings**
**Art.-Nr. 10114-**

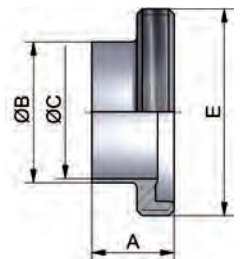
Art.-Nr. 10114-							AISI 304/304L-1.4301/1.4307		AISI 316L-1.4404*	
DN	A	B	C	D	E	Gew.	Art.-Nr.	Preis	Art.-Nr.	Preis
mm	mm	mm	mm	mm	mm	kg	Ra<0,8	EUR	Ra<0,8	EUR
10	19,0	13,0	10,0		Rd28x1/8	0,030	-0101000	(+)	-0103000	16,80
15	19,0	19,0	16,0		Rd34x1/8	0,040	-0151000	(+)	-0153000	17,10
20	21,0	23,0	20,0		Rd44x1/6	0,080	-0201000	(+)	-0203000	18,40
25	26,0	29,0	26,0		Rd52x1/6	0,120	-0251000	15,80	-0253000	16,80
32	30,0	35,0	32,0		Rd58x1/6	0,140	-0321000	16,50	-0323000	17,40
40	31,0	41,0	38,0		Rd65x1/6	0,150	-0401000	16,60	-0403000	18,20
50	31,0	53,0	50,0		Rd78x1/6	0,240	-0501000	18,90	-0503000	19,70
65	36,0	70,0	66,0		Rd95x1/6	0,370	-0651000	26,40	-0653000	29,50
80	42,0	85,0	81,0		Rd110x1/4	0,540	-0801000	34,50	-0803000	39,20
100	50,0	104,0	100,0		Rd130x1/4	0,700	-1001000	51,00	-1003000	58,10

 \*Deltaferritgehalt < 3,0%  
 Rd: Rundgewinde

 \*content of delta-ferrite < 3,0%  
 Rd: round thread

**HyCom-  
Gewindestutzen  
DIN  
DIN 11853-GS**
**HyCom-  
male  
DIN  
DIN 11853-GS**
**Art.-Nr. 10115-**

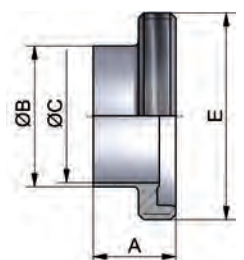
Art.-Nr. 10115-							AISI 304/304L-1.4301/1.4307		AISI 316L-1.4404*	
DN	A	B	C	D	E	Gew.	Art.-Nr.	Preis	Art.-Nr.	Preis
mm	mm	mm	mm	mm	mm	kg	Ra<0,8	EUR	Ra<0,8	EUR
0,5"	19,0	12,7	9,4		Rd28x1/8	0,012	-0121000	17,60	-0123000	18,10
0,75"	19,0	19,05	15,75		Rd34x1/8	0,025	-0341000	18,50	-0343000	19,10
1"	26,0	25,4	22,1		Rd52x1/6	0,120	-1001000	20,50	-1003000	21,10
1,5"	31,0	38,1	34,8		Rd65x1/6	0,170	-1121000	22,30	-1123000	23,00
2"	31,0	50,8	47,5		Rd78x1/6	0,230	-2001000	26,10	-2003000	26,90
2,5"	36,0	63,5	60,2		Rd95x1/6	0,360	-2121000	34,90	-2123000	36,50
3"	42,0	76,2	72,9		Rd110x1/4	0,530	-3001000	54,10	-3003000	54,40
4"	50,0	101,6	97,4		Rd130x1/4	0,670	-4001000	60,70	-4003000	64,20

 \*Deltaferritgehalt < 3,0%  
 Rd: Rundgewinde

 \*content of delta-ferrite < 3,0%  
 Rd: round thread

**HyCom-  
Gewindestutzen  
ASME  
DIN 11853-GS**
**HyCom-  
male  
ASME  
DIN 11853-GS**
**Art.-Nr. 10116-**

Art.-Nr. 10116-							AISI 304/304L-1.4301/1.4307		AISI 316L-1.4404*	
DN	A	B	C	D	E	Gew.	Art.-Nr.	Preis	Art.-Nr.	Preis
mm	mm	mm	mm	mm	mm	kg	Ra<0,8	EUR	Ra<0,8	EUR
13,5	19,0	13,5	10,3		Rd28x1/8	0,025	-0081000	(+)	-0083000	(+)
17,2	19,0	17,2	14,0		Rd34x1/8	0,030	-0101000	(+)	-0103000	(+)
21,3	21,0	21,3	18,1		Rd44x1/6	0,040	-0151000	(+)	-0153000	(+)
26,9	26,0	26,9	23,7		Rd52x1/6	0,080	-0201000	(+)	-0203000	(+)
33,7	30,0	33,7	29,7		Rd58x1/6	0,120	-0251000	(+)	-0253000	(+)
42,4	31,0	42,4	38,4		Rd65x1/6	0,140	-0321000	(+)	-0323000	(+)
48,3	31,0	48,3	44,3		Rd78x1/6	0,150	-0401000	(+)	-0403000	(+)
60,3	36,0	60,3	56,3		Rd95x1/6	0,240	-0501000	(+)	-0503000	(+)
76,1	42,0	76,1	72,1		Rd110x1/4	0,370	-0651000	(+)	-0653000	(+)
88,9	50,0	88,9	84,3		Rd130x1/4	0,540	-0801000	(+)	-0803000	(+)

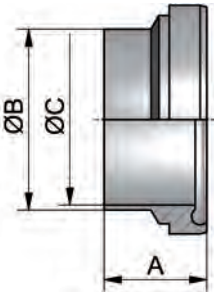
 \*Deltaferritgehalt < 3,0%  
 Rd: Rundgewinde  
 (+) Preis auf Anfrage

 \*content of delta-ferrite < 3,0%  
 Rd: round thread  
 (+) price on inquiry

**HyCom-  
Gewindestutzen  
ISO  
DIN 11853-GS**
**HyCom-  
male  
ISO  
DIN 11853-GS**

## Hygienearmaturen – HyCom-Armaturen

## hygienic fittings – HyCom-fittings

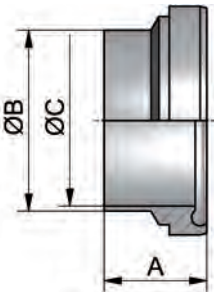
HyCom-Bundstutzen DIN DIN 11853-BS	Art.-Nr. 10120-							AISI 304/304L-1.4301/1.4307		AISI 316L-1.4404*	
	DN	A	B	C	D	E	Gew.	Art.-Nr.	Preis	Art.-Nr.	Preis
HyCom-liner DIN DIN 11853-BS	mm	mm	mm	mm	mm	mm	kg	Ra<0,8	EUR	Ra<0,8	EUR
	10	17,0	13,0	10,0			0,030	-0101000	(+)	-0103000	13,05
	15	17,0	19,0	16,0			0,040	-0151000	(+)	-0153000	13,35
	20	18,0	23,0	20,0			0,050	-0201000	(+)	-0203000	16,00
	25	22,0	29,0	26,0			0,080	-0251000	13,00	-0253000	13,80
	32	25,0	35,0	32,0			0,110	-0321000	14,00	-0323000	15,10
	40	26,0	41,0	38,0			0,130	-0401000	14,10	-0403000	15,20
	50	30,0	53,0	50,0			0,170	-0501000	17,50	-0503000	19,10
	65	34,0	70,0	66,0			0,330	-0651000	22,90	-0653000	25,20
	80	38,0	85,0	81,0			0,400	-0801000	30,50	-0803000	34,70
	100	46,0	104,0	100,0			0,660	-1001000	42,50	-1003000	48,70



\*Deltaferritgehalt < 3,0%

\*content of delta-ferrite < 3,0%

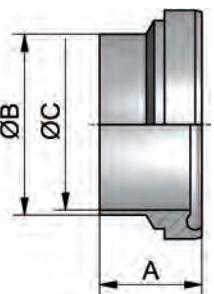
HyCom-Bundstutzen ASME DIN 11853-BS	Art.-Nr. 10121-							AISI 304/304L-1.4301/1.4307		AISI 316L-1.4404*	
	DN	A	B	C	D	E	Gew.	Art.-Nr.	Preis	Art.-Nr.	Preis
HyCom-liner ASME DIN 11853-BS	mm	mm	mm	mm	mm	mm	kg	Ra<0,8	EUR	Ra<0,8	EUR
	0,5"	17,0	12,7	9,4			0,010	-0121000	14,20	-0123000	14,65
	0,75"	17,0	19,05	15,75			0,022	-0341000	15,20	-0343000	15,65
	1"	22,0	25,4	22,1			0,080	-1001000	13,80	-1003000	14,20
	1,5"	26,0	38,1	34,8			0,130	-1121000	15,50	-1123000	16,10
	2"	30,0	50,8	47,5			0,170	-2001000	20,70	-2003000	21,40
	2,5"	34,0	63,5	60,2			0,330	-2121000	27,10	-2123000	28,90
	3"	38,0	76,2	72,9			0,400	-3001000	41,20	-3003000	43,30
	4"	46,0	101,6	97,4			0,660	-4001000	49,40	-4003000	53,20



\*Deltaferritgehalt < 3,0%

\*content of delta-ferrite < 3,0%

HyCom-Bundstutzen ISO DIN 11853-BS	Art.-Nr. 10122-							AISI 304/304L-1.4301/1.4307		AISI 316L-1.4404*	
	DN	A	B	C	D	E	Gew.	Art.-Nr.	Preis	Art.-Nr.	Preis
HyCom-liner ISO DIN 11853-BS	mm	mm	mm	mm	mm	mm	kg	Ra<0,8	EUR	Ra<0,8	EUR
	13,5	17,0	13,5	10,3			0,020	-0081000	(+)	-0083000	(+)
	17,2	17,0	17,2	14,0			0,025	-0101000	(+)	-0103000	(+)
	21,3	18,0	21,3	18,1			0,035	-0151000	(+)	-0153000	(+)
	26,9	22,0	26,9	23,7			0,070	-0201000	(+)	-0203000	(+)
	33,7	25,0	33,7	29,7			0,100	-0251000	(+)	-0253000	(+)
	42,4	26,0	42,4	38,4			0,120	-0321000	(+)	-0323000	(+)
	48,3	30,0	48,3	44,3			0,130	-0401000	(+)	-0403000	(+)
	60,3	34,0	60,3	56,3			0,200	-0501000	(+)	-0503000	(+)
	76,1	38,0	76,1	72,1			0,310	-0651000	(+)	-0653000	(+)
	88,9	46,0	88,9	84,3			0,490	-0801000	(+)	-0803000	(+)



\*Deltaferritgehalt < 3,0%

\*content of delta-ferrite < 3,0%

(+) Preis auf Anfrage

(+) price on inquiry



**Hygienearmaturen – HyCom-Armaturen**
**hygienic fittings – HyCom-fittings**
**Art.-Nr. 10123-**

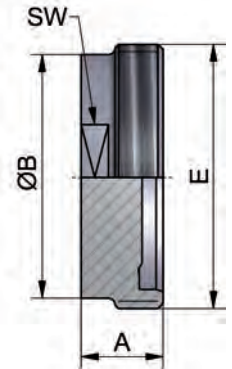
DN	A	B	C	D	E	Gew.
mm	mm	mm	mm	mm	mm	kg
10	24,0	23,0	SW19		Rd28x1/8	0,090
15	24,0	28,0	SW24		Rd34x1/8	0,100
20	24,0	34,0	SW30		Rd44x1/6	0,160
25	24,0	44,0	SW41		Rd52x1/6	0,260
32	24,0	53,0	SW46		Rd58x1/6	0,340
40	24,0	58,0	SW50		Rd65x1/6	0,420
50	24,0	72,0	SW65		Rd78x1/6	0,640
65	28,0	87,0	SW80		Rd95x1/6	1,080
80	28,0	100,0	SW95		Rd110x1/4	1,420
100	30,0	120,0	SW115		Rd130x1/4	2,220

AISI 316L-1.4404

Art.-Nr.	Preis
Ra < 0,8	EUR
-0103000	38,90
-0153000	39,60
-0203000	40,80
-0253000	46,30
-0323000	48,20
-0403000	50,50
-0503000	53,10
-0653000	64,50
-0803000	73,80
-1003000	85,80

 SW: Schlüsselweite - Rd: Rundgewinde  
 Deltaferritgehalt < 3,0%

 SW: width across flats - Rd: round thread  
 content of delta-ferrite < 3,0%

**HyCom-Blindgewindestutzen  
DIN  
DIN 11853-BGS**
**HyCom-male blank  
DIN  
DIN 11853-BGS**

**Art.-Nr. 10124-**

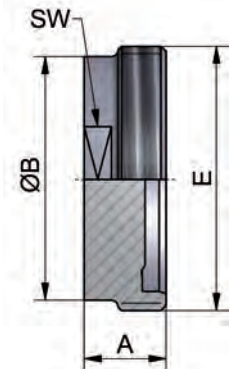
DN	A	B	C	D	E	Gew.
mm	mm	mm	mm	mm	mm	kg
0,5"	24,0	23,0	SW19		Rd28x1/8	0,090
0,75"	24,0	28,0	SW24		Rd34x1/8	0,100
1"	24,0	44,0	SW41		Rd52x1/6	0,260
1,5"	24,0	58,0	SW50		Rd65x1/6	0,420
2"	24,0	72,0	SW65		Rd78x1/6	0,640
2,5"	28,0	87,0	SW80		Rd95x1/6	1,080
3"	28,0	100,0	SW95		Rd110x1/4	1,420
4"	30,0	120,0	SW115		Rd130x1/4	2,040

Art.-Nr.	Preis
	EUR

**siehe PharmCom-Armaturen  
see PharmCom-fittings**

 SW: Schlüsselweite - Rd: Rundgewinde  
 Verfügbar in AISI 316L-1.4435  
 andere Werkstoffe auf Anfrage (stückzahlabhängig)

 SW: width across flats - Rd: round thread  
 available in AISI 316L-1.4435  
 other materials on request (depending on quantity)

**HyCom-Blindgewindestutzen  
ASME  
DIN 11853-BGS**
**HyCom-male blank  
ASME  
DIN 11853-BGS**

**Art.-Nr. 10125-**

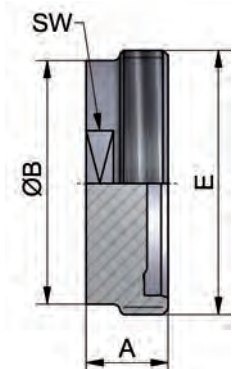
DN	A	B	C	D	E	Gew.
mm	mm	mm	mm	mm	mm	kg
13,5	24,0	23,0	SW19		Rd28x1/8	0,060
17,2	24,0	28,0	SW24		Rd34x1/8	0,090
21,3	24,0	34,0	SW30		Rd44x1/6	0,100
26,9	24,0	44,0	SW41		Rd52x1/6	0,160
33,7	24,0	53,0	SW46		Rd58x1/6	0,260
42,4	24,0	58,0	SW50		Rd65x1/6	0,340
48,3	24,0	72,0	SW65		Rd78x1/6	0,420
60,3	28,0	87,0	SW80		Rd95x1/6	0,640
76,1	28,0	100,0	SW95		Rd110x1/4	1,080
88,9	30,0	120,0	SW115		Rd130x1/4	1,420

Art.-Nr.	Preis
	EUR

**siehe PharmCom-Armaturen  
see PharmCom-fittings**

 SW: Schlüsselweite - Rd: Rundgewinde  
 Verfügbar in AISI 316L-1.4435  
 andere Werkstoffe auf Anfrage (stückzahlabhängig)

 SW: width across flats - Rd: round thread  
 available in AISI 316L-1.4435  
 other materials on request (depending on quantity)

**HyCom-Blindgewindestutzen  
ISO  
DIN 11853-BGS**
**HyCom-male blank  
ISO  
DIN 11853-BGS**


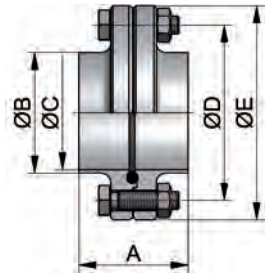


**Hygienearmaturen – HyCom-Armaturen**
**hygienic fittings – HyCom-fittings**
**Art-Nr. 10134-**

							AISI 304/304L-1.4301/1.4307		AISI 316L-1.4404*	
DN	A	B	C	D	E Gew.		Art.-Nr.	Preis	Art.-Nr.	Preis
mm	mm	mm	mm	mm	mm	kg	Ra<0,8 EPDM	EUR	Ra<0,8 EPDM	EUR
10	48,0	13,0	10,0	37,0	54,0	0,350	-0101300	65,40	-0103300	67,40
15	48,0	19,0	16,0	42,0	59,0	0,400	-0151300	66,80	-0153300	68,80
20	48,0	23,0	20,0	47,0	64,0	0,490	-0201300	71,05	-0203300	73,05
25	48,0	29,0	26,0	53,0	70,0	0,550	-0251300	54,05	-0253300	56,95
32	48,0	35,0	32,0	59,0	76,0	0,680	-0321300	62,05	-0323300	63,15
40	48,0	41,0	38,0	65,0	82,0	0,750	-0401300	60,55	-0403300	62,45
50	48,0	53,0	50,0	77,0	94,0	0,850	-0501300	63,20	-0503300	67,10
65	48,0	70,0	66,0	95,0	113,0	1,320	-0651300	78,50	-0653300	85,00
80	52,0	85,0	81,0	112,0	133,0	2,000	-0801300	108,70	-0803300	118,90
100	52,0	104,0	100,0	137,0	159,0	3,102	-1001300	127,10	-1003300	140,90
125	56,0	129,0	125,0	161,0	183,0	4,100	-1251300	449,40	-1253300	489,40
150	56,0	154,0	150,0	188,0	213,0	6,900	-1501300	626,30	-1503300	690,30

 \*Deltaferrit < 3,0% - wird in Einzelteilen geliefert  
 weitere Dichtungen siehe Artikel 10117

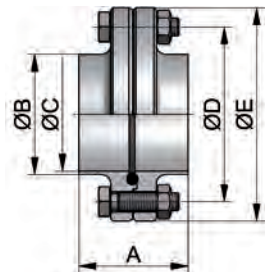
 \*content of delta-ferrite < 3,0% - delivered in single components  
 other gaskets see article 10117

**HyCom-  
Flanschverbindung  
DIN  
DIN 11853-F**
**HyCom-  
flange connection  
DIN  
DIN 11853-F**

**Art-Nr. 10135-**

							AISI 304/304L-1.4301/1.4307		AISI 316L-1.4404*	
DN	A	B	C	D	E Gew.		Art.-Nr.	Preis	Art.-Nr.	Preis
mm	mm	mm	mm	mm	mm	kg	Ra<0,8 EPDM	EUR	Ra<0,8 EPDM	EUR
0,5"	48,0	12,7	9,4	37,0	54,0	0,350	-0121300	70,30	-0123300	72,40
0,75"	48,0	19,05	15,75	42,0	59,0	0,400	-0341300	71,80	-0343300	74,00
1"	48,0	25,4	22,1	49,0	66,0	0,550	-1001300	57,75	-1003300	60,95
1,5"	48,0	38,1	34,8	62,0	79,0	0,700	-1121300	64,95	-1123300	66,95
2"	48,0	50,8	47,5	75,0	92,0	0,850	-2001300	67,80	-2003300	72,10
2,5"	48,0	63,5	60,2	89,0	107,0	1,320	-2121300	84,50	-2123300	91,50
3"	48,0	76,2	72,9	104,0	125,0	2,000	-3001300	145,70	-3003300	152,90
4"	52,0	101,6	97,4	135,0	157,0	3,100	-4001300	163,20	-4003300	178,20

 \*Deltaferrit < 3,0% - wird in Einzelteilen geliefert  
 weitere Dichtungen siehe Artikel 10118

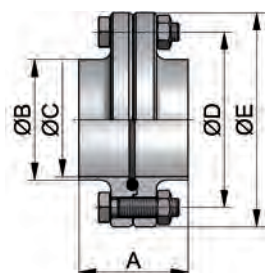
 \*content of delta-ferrite < 3,0% - delivered in single components  
 other gaskets see article 10118

**HyCom-  
Flanschverbindung  
ASME  
DIN 11853-F**
**HyCom-  
flange connection  
ASME  
DIN 11853-F**

**Art-Nr. 10136-**

							AISI 304/304L-1.4301/1.4307		AISI 316L-1.4404*	
DN	A	B	C	D	E Gew.		Art.-Nr.	Preis	Art.-Nr.	Preis
mm	mm	mm	mm	mm	mm	kg	Ra<0,8 EPDM	EUR	Ra<0,8 EPDM	EUR
13,5	48,0	13,5	10,3	37,0	54,0	0,350	-0081300	(+)	-0083300	(+)
17,2	48,0	17,2	14,0	42,0	59,0	0,400	-0101300	(+)	-0103300	(+)
21,3	48,0	21,3	18,1	45,0	62,0	0,490	-0151300	(+)	-0153300	(+)
26,9	48,0	26,9	23,7	52,0	69,0	0,550	-0201300	(+)	-0203300	(+)
33,7	48,0	33,7	29,7	57,0	74,0	0,680	-0251300	(+)	-0253300	(+)
42,4	48,0	42,4	38,4	65,0	82,0	0,750	-0321300	(+)	-0323300	(+)
48,3	48,0	48,3	44,3	71,0	88,0	0,850	-0401300	(+)	-0403300	(+)
60,3	48,0	60,3	56,3	85,0	103,0	1,320	-0501300	(+)	-0503300	(+)
76,1	48,0	76,1	72,1	104,0	125,0	2,000	-0651300	(+)	-0653300	(+)
88,9	52,0	88,9	84,3	116,0	137,0	2,150	-0801300	(+)	-0803300	(+)

 \*Deltaferrit < 3,0% - wird in Einzelteilen geliefert  
 weitere Dichtungen siehe Artikel 10119  
 (+) Preis auf Anfrage

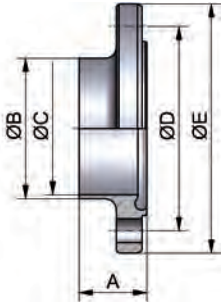
 \*content of delta-ferrite < 3,0% - delivered in single components  
 other gaskets see article 10119  
 (+) price on inquiry

**HyCom-  
Flanschverbindung  
ISO  
DIN 11853-F**
**HyCom-  
flange connection  
ISO  
DIN 11853-F**


## Hygienearmaturen – HyCom-Armaturen

## hygienic fittings – HyCom-fittings

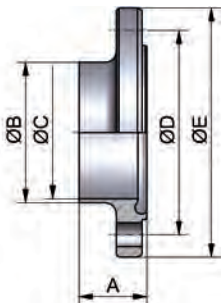
HyCom-Nutflansch DIN DIN 11853-NF	Art.-Nr. 10140-							AISI 304/304L-1.4301/1.4307		AISI 316L-1.4404*	
	DN	A	B	C	D	E	Gew.	Art.-Nr.	Preis	Art.-Nr.	Preis
	mm	mm	mm	mm	mm	mm	kg	Ra<0,8	EUR	Ra<0,8	EUR
	10	25,5	13,0	10,0	37,0	54,0	0,160	-0101000	25,90	-0103000	26,90
	15	25,5	19,0	16,0	42,0	59,0	0,200	-0151000	26,60	-0153000	27,60
	20	25,5	23,0	20,0	47,0	64,0	0,240	-0201000	28,50	-0203000	29,50
HyCom-flange groove DIN DIN 11853-NF	25	25,5	29,0	26,0	53,0	70,0	0,280	-0251000	19,70	-0253000	21,20
	32	25,5	35,0	32,0	59,0	76,0	0,340	-0321000	22,60	-0323000	23,20
	40	25,5	41,0	38,0	65,0	82,0	0,360	-0401000	22,90	-0403000	23,90
	50	25,5	53,0	50,0	77,0	94,0	0,440	-0501000	24,10	-0503000	26,10
	65	25,5	70,0	66,0	95,0	113,0	0,640	-0651000	31,20	-0653000	34,50
	80	27,5	85,0	81,0	112,0	133,0	0,940	-0801000	43,80	-0803000	48,90
	100	27,5	104,0	100,0	137,0	159,0	1,480	-1001000	52,30	-1003000	59,20
	125	29,5	129,0	125,0	161,0	183,0	1,720	-1251000	212,00	-1253000	232,00
	150	29,5	154,0	150,0	188,0	213,0	3,500	-1501000	298,00	-1503000	330,00



\*Deltaferritgehalt < 3,0%

\*content of delta-ferrite < 3,0%

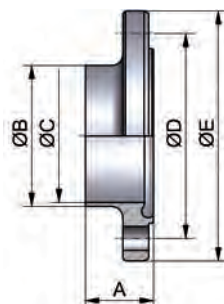
HyCom-Nutflansch ASME DIN 11853-NF	Art.-Nr. 10141-							AISI 304/304L-1.4301/1.4307		AISI 316L-1.4404*	
	DN	A	B	C	D	E	Gew.	Art.-Nr.	Preis	Art.-Nr.	Preis
	mm	mm	mm	mm	mm	mm	kg	Ra<0,8	EUR	Ra<0,8	EUR
	0,5"	25,5	12,7	9,4	37,0	54,0	0,160	-0121000	28,40	-0123000	29,40
	0,75"	25,5	19,05	15,75	42,0	59,0	0,200	-0341000	29,10	-0343000	30,20
	1"	25,5	25,4	22,1	49,0	66,0	0,280	-1001000	21,50	-1003000	23,20
HyCom-flange groove ASME DIN 11853-NF	1,5"	25,5	38,1	34,8	62,0	79,0	0,360	-1121000	25,10	-1123000	26,20
	2"	25,5	50,8	47,5	75,0	92,0	0,440	-2001000	26,40	-2003000	28,60
	2,5"	25,5	63,5	60,2	89,0	107,0	0,640	-2121000	34,20	-2123000	37,80
	3"	25,5	76,2	72,9	104,0	125,0	0,940	-3001000	62,50	-3003000	66,10
	4"	27,5	101,6	97,4	135,0	157,0	1,480	-4001000	70,50	-4003000	78,10



\*Deltaferritgehalt < 3,0%

\*content of delta-ferrite < 3,0%

HyCom-Nutflansch ISO DIN 11853-NF	Art.-Nr. 10142-							AISI 304/304L-1.4301/1.4307		AISI 316L-1.4404*	
	DN	A	B	C	D	E	Gew.	Art.-Nr.	Preis	Art.-Nr.	Preis
	mm	mm	mm	mm	mm	mm	kg	Ra<0,8	EUR	Ra<0,8	EUR
	13,5	25,5	13,5	10,3	37,0	54,0	0,160	-0081000	(+)	-0083000	(+)
	17,2	25,5	17,2	14,0	42,0	59,0	0,160	-0101000	(+)	-0103000	(+)
	21,3	25,5	21,3	18,1	45,0	62,0	0,200	-0151000	(+)	-0153000	(+)
HyCom-flange groove ISO DIN 11853-NF	26,9	25,5	26,9	23,7	52,0	69,0	0,240	-0201000	(+)	-0203000	(+)
	33,7	25,5	33,7	29,7	57,0	74,0	0,280	-0251000	(+)	-0253000	(+)
	42,4	25,5	42,4	38,4	65,0	82,0	0,340	-0321000	(+)	-0323000	(+)
	48,3	25,5	48,3	44,3	71,0	88,0	0,360	-0401000	(+)	-0403000	(+)
	60,3	25,5	60,3	56,3	85,0	103,0	0,440	-0501000	(+)	-0503000	(+)
	76,1	25,5	76,1	72,1	104,0	128,0	0,640	-0651000	(+)	-0653000	(+)
	88,9	27,5	88,9	84,3	116,0	137,0	0,940	-0801000	(+)	-0803000	(+)
	114,3	27,5	114,3	109,7	146,0	168,0	1,480	-1001000	(+)	-1003000	(+)



\*Deltaferritgehalt < 3,0%

\*content of delta-ferrite < 3,0%

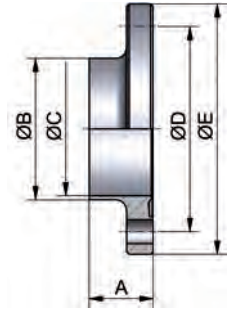
(+) Preis auf Anfrage

(+) price on inquiry

**Hygienearmaturen – HyCom-Armaturen**
**hygienic fittings – HyCom-fittings**
**Art.-Nr. 10143-**

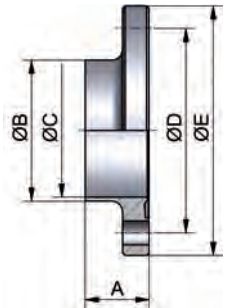
Art.-Nr. 10143-							AISI 304/304L-1.4301/1.4307		AISI 316L-1.4404*	
DN	A	B	C	D	E Gew.		Art.-Nr.	Preis	Art.-Nr.	Preis
mm	mm	mm	mm	mm	mm	kg	Ra<0,8	EUR	Ra<0,8	EUR
10	24,0	13,0	10,0	37,0	54,0	0,160	-0101000	25,60	-0103000	26,60
15	24,0	19,0	16,0	42,0	59,0	0,200	-0151000	26,30	-0153000	27,30
20	24,0	23,0	20,0	47,0	64,0	0,240	-0201000	28,20	-0203000	29,20
25	24,0	29,0	26,0	53,0	70,0	0,260	-0251000	19,50	-0253000	20,90
32	24,0	35,0	32,0	59,0	76,0	0,320	-0321000	22,40	-0323000	22,90
40	24,0	41,0	38,0	65,0	82,0	0,360	-0401000	22,70	-0403000	23,60
50	24,0	53,0	50,0	77,0	94,0	0,440	-0501000	23,80	-0503000	25,70
65	24,0	70,0	66,0	95,0	113,0	0,640	-0651000	30,70	-0653000	33,90
80	26,0	85,0	81,0	112,0	133,0	0,960	-0801000	42,80	-0803000	47,90
100	26,0	104,0	100,0	137,0	159,0	1,480	-1001000	51,10	-1003000	58,00
125	28,0	129,0	125,0	161,0	183,0	1,720	-1251000	207,00	-1253000	227,00
150	28,0	154,0	150,0	188,0	213,0	3,500	-1501000	292,00	-1503000	324,00

\*Deltaferritgehalt < 3,0%      \*content of delta-ferrite < 3,0%

**HyCom-Bundflansch  
DIN  
DIN 11853-BF**
**HyCom-flange collar  
DIN  
DIN 11853-BF**

**Art.-Nr. 10144-**

Art.-Nr. 10144-							AISI 304/304L-1.4301/1.4307		AISI 316L-1.4404*	
DN	A	B	C	D	E Gew.		Art.-Nr.	Preis	Art.-Nr.	Preis
mm	mm	mm	mm	mm	mm	kg	Ra<0,8	EUR	Ra<0,8	EUR
0,5"	24,0	12,7	9,4	37,0	54,0	0,160	-0121000	28,00	-0123000	29,10
0,75"	24,0	19,05	15,75	42,0	59,0	0,200	-0341000	28,80	-0343000	29,90
1"	24,0	25,4	22,1	49,0	66,0	0,280	-1001000	21,40	-1003000	22,90
1,5"	24,0	38,1	34,8	62,0	79,0	0,360	-1121000	24,90	-1123000	25,80
2"	24,0	50,8	47,5	75,0	92,0	0,440	-2001000	26,10	-2003000	28,20
2,5"	24,0	63,5	60,2	89,0	107,0	0,640	-2121000	33,70	-2123000	37,10
3"	24,0	76,2	72,9	104,0	125,0	0,940	-3001000	61,40	-3003000	65,00
4"	26,0	101,6	97,4	135,0	157,0	1,480	-4001000	69,00	-4003000	76,40

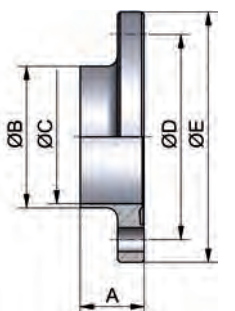
\*Deltaferritgehalt < 3,0%      \*content of delta-ferrite < 3,0%

**HyCom-Bundflansch  
ASME  
DIN 11853-BF**
**HyCom-flange collar  
ASME  
DIN 11853-BF**

**Art.-Nr. 10145-**

Art.-Nr. 10145-							AISI 304/304L-1.4301/1.4307		AISI 316L-1.4404*	
DN	A	B	C	D	E Gew.		Art.-Nr.	Preis	Art.-Nr.	Preis
mm	mm	mm	mm	mm	mm	kg	Ra<0,8	EUR	Ra<0,8	EUR
13,5	24,0	13,5	10,3	37,0	54,0	0,160	-0081000	(+)	-0083000	(+)
17,2	24,0	17,2	14,0	42,0	59,0	0,160	-0101000	(+)	-0103000	(+)
21,3	24,0	21,3	18,1	45,0	62,0	0,200	-0151000	(+)	-0153000	(+)
26,9	24,0	26,9	23,7	52,0	69,0	0,240	-0201000	(+)	-0203000	(+)
33,7	24,0	33,7	29,7	57,0	74,0	0,280	-0251000	(+)	-0253000	(+)
42,4	24,0	42,4	38,4	65,0	82,0	0,340	-0321000	(+)	-0323000	(+)
48,3	24,0	48,3	44,3	71,0	88,0	0,360	-0401000	(+)	-0403000	(+)
60,3	24,0	60,3	56,3	85,0	103,0	0,440	-0501000	(+)	-0503000	(+)
76,1	24,0	76,1	72,1	104,0	128,0	0,640	-0651000	(+)	-0653000	(+)
88,9	26,0	88,9	84,3	116,0	137,0	0,940	-0801000	(+)	-0803000	(+)
114,3	26,0	114,3	109,7	146,0	168,0	1,480	-1001000	(+)	-1003000	(+)

\*Deltaferritgehalt < 3,0%      \*content of delta-ferrite < 3,0%

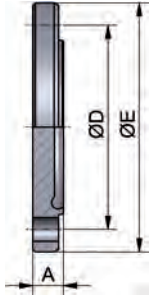
(+) Preis auf Anfrage      (+) price on inquiry

**HyCom-Bundflansch  
ISO  
DIN 11853-BF**
**HyCom-flange collar  
ISO  
DIN 11853-BF**


## Hygienearmaturen – HyCom-Armaturen

## hygienic fittings – HyCom-fittings

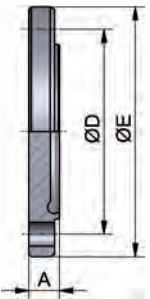
HyCom-Blindnutflansch DIN DIN 11853-BNF	Art.-Nr. 10176-							AISI 316L-1.4404	
	DN	A	B	C	D	E	Gew.	Art.-Nr.	Preis
	mm	mm	mm	mm	mm	mm	kg	Ra<0,8	EUR
	10	11,5			37,0	54,0	0,100	-0103000	41,80
	15	11,5			42,0	59,0	0,200	-0153000	42,30
	20	11,5			47,0	64,0	0,200	-0203000	42,90
HyCom-blind flange groove DIN DIN 11853-BNF	25	11,5			53,0	70,0	0,260	-0253000	45,30
	32	11,5			59,0	76,0	0,320	-0323000	48,20
	40	11,5			65,0	82,0	0,480	-0403000	50,10
	50	11,5			77,0	94,0	0,480	-0503000	54,10
	65	11,5			95,0	113,0	0,680	-0653000	62,60
	80	13,5			112,0	133,0	1,160	-0803000	74,80
	100	15,5			137,0	159,0	2,060	-1003000	89,50
	125	15,5			161,0	183,0	3,060	-1253000	124,80
	150	17,5			188,0	213,0	4,060	-1503000	158,90



Deltaferritgehalt < 3,0%

content of delta-ferrite < 3,0%

HyCom-Blindnutflansch ASME DIN 11853-BNF	Art.-Nr. 10177-							Art.-Nr.	Preis EUR
	DN	A	B	C	D	E	Gew.		
	mm	mm	mm	mm	mm	mm	kg		
	0,5"	11,5			37,0	54,0	0,150		
	0,75"	11,5			42,0	59,0	0,200		
	1"	11,5			49,0	66,0	0,200		
HyCom-blind flange groove ASME DIN 11853-BNF	1,5"	11,5			62,0	79,0	0,200		
	2"	11,5			75,0	92,0	0,460		
	2,5"	11,5			89,0	107,0	0,560		
	3"	13,5			104,0	125,0	0,900		
	4"	15,5			135,0	157,0	1,940		



**siehe PharmCom-Armaturen  
see PharmCom-fittings**

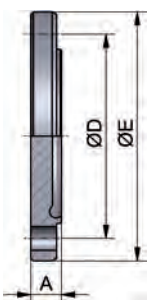
Verfügbar in AISI 316L-1.4435

available in AISI 316L-1.4435

andere Werkstoffe auf Anfrage (stückzahlabhängig)

other materials on request (depending on quantity)

HyCom-Blindnutflansch ISO DIN 11853-BNF	Art.-Nr. 10178-							Art.-Nr.	Preis EUR
	DN	A	B	C	D	E	Gew.		
	mm	mm	mm	mm	mm	mm	kg		
	13,5	11,5			37,0	54,0	0,100		
	17,2	11,5			42,0	59,0	0,100		
	21,3	11,5			45,0	62,0	0,150		
HyCom-blind flange groove ISO DIN 11853-BNF	26,9	11,5			52,0	69,0	0,200		
	33,7	11,5			57,0	74,0	0,300		
	42,4	11,5			65,0	82,0	0,360		
	48,3	11,5			71,0	88,0	0,420		
	60,3	11,5			85,0	103,0	0,580		
	76,1	13,5			104,0	128,0	1,000		
	88,9	13,5			116,0	137,0	1,300		
	114,3	15,5			146,0	168,0	2,340		



**siehe PharmCom-Armaturen  
see PharmCom-fittings**

Verfügbar in AISI 316L-1.4435

available in AISI 316L-1.4435

andere Werkstoffe auf Anfrage (stückzahlabhängig)

other materials on request (depending on quantity)

**Hygienearmaturen – HyCom-Armaturen**
**hygienic fittings – HyCom-fittings**
**Art.-Nr. 10179-**

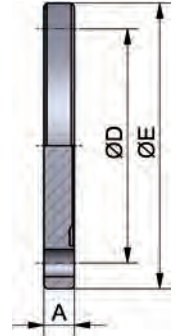
AISI 316L-1.4404

DN	A	B	C	D	E	Gew.
mm	mm	mm	mm	mm	mm	kg
10	10,0			37,0	54,0	0,100
15	10,0			42,0	59,0	0,200
20	10,0			47,0	64,0	0,200
25	10,0			53,0	70,0	0,260
32	10,0			59,0	76,0	0,320
40	10,0			65,0	82,0	0,480
50	10,0			77,0	94,0	0,480
65	10,0			95,0	113,0	0,680
80	12,0			112,0	133,0	1,160
100	14,0			137,0	159,0	2,060
125	14,0			161,0	183,0	3,060
150	16,0			188,0	213,0	4,060

Art.-Nr.	Preis
Ra < 0,8	EUR
-0103000	41,50
-0153000	42,00
-0203000	42,60
-0253000	44,90
-0323000	47,80
-0403000	49,60
-0503000	53,40
-0653000	61,60
-0803000	73,80
-1003000	88,00
-1253000	123,00
-1503000	157,00

Deltaferritgehalt &lt; 3,0%

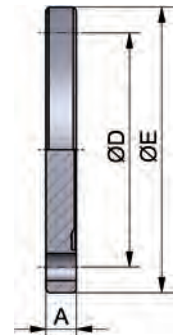
content of delta-ferrite &lt; 3,0%

**HyCom-Blindbundflansch DIN 11853-BBF**
**HyCom-blind flange collar DIN 11853-BBF**

**Art.-Nr. 10180-**

DN	A	B	C	D	E	Gew.
mm	mm	mm	mm	mm	mm	kg
0,5"	10,0			37,0	54,0	0,150
0,75"	10,0			42,0	59,0	0,180
1"	10,0			49,0	66,0	0,240
1,5"	10,0			62,0	79,0	0,340
2"	10,0			75,0	92,0	0,480
2,5"	10,0			89,0	107,0	0,640
3"	12,0			104,0	125,0	1,040
4"	14,0			135,0	157,0	2,020

**siehe PharmCom-Armaturen  
see PharmCom-fittings**

Art.-Nr.	Preis
	EUR

**HyCom-Blindbundflansch ASME 11853-BBF**
**HyCom-blind flange collar ASME 11853-BBF**


Verfügbar in AISI 316L-1.4435

available in AISI 316L-1.4435

andere Werkstoffe auf Anfrage (stückzahlabhängig)

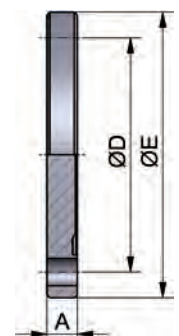
other materials on request (depending on quantity)

**Art.-Nr. 10181-**

DN	A	B	C	D	E	Gew.
mm	mm	mm	mm	mm	mm	kg
13,5	10,0			37,0	54,0	0,100
17,2	10,0			42,0	59,0	0,100
21,3	10,0			45,0	62,0	0,150
26,9	10,0			52,0	69,0	0,200
33,7	10,0			57,0	74,0	0,300
42,4	10,0			65,0	82,0	0,360
48,3	10,0			71,0	88,0	0,420
60,3	10,0			85,0	103,0	0,580
76,1	12,0			104,0	128,0	1,000
88,9	12,0			116,0	137,0	1,300
114,3	14,0			146,0	168,0	2,340

**siehe PharmCom-Armaturen  
see PharmCom-fittings**

Art.-Nr.	Preis
	EUR

**HyCom-Blindbundflansch ISO 11853-BBF**
**HyCom-blind flange collar ISO 11853-BBF**


Verfügbar in AISI 316L-1.4435

available in AISI 316L-1.4435

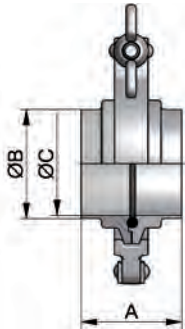
andere Werkstoffe auf Anfrage (stückzahlabhängig)

other materials on request (depending on quantity)

**Hygienearmaturen – HyCom-Armaturen**
**hygienic fittings – HyCom-fittings**

HyCom-  
Klemmverbindung  
DIN  
DIN 11853-K

HyCom-  
clamp connection  
DIN  
DIN 11853-K



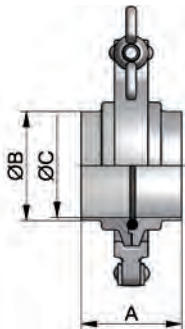
Art-Nr. 10137-							AISI 304/304L-1.4301/1.4307		AISI 316L-1.4404*	
DN	A	B	C	D	E	Gew.	Art.-Nr.	Preis	Art.-Nr.	Preis
mm	mm	mm	mm	mm	mm	kg	Ra<0,8 EPDM	EUR	Ra<0,8 EPDM	EUR
10	44,0	13,0	10,0	43,0		0,256	-0101300	(+)	-0103300	(+)
15	44,0	19,0	16,0	43,0		0,256	-0151300	(+)	-0153300	(+)
20	44,0	23,0	20,0	57,0		0,426	-0201300	(+)	-0203300	(+)
25	44,0	29,0	26,0	57,0		0,416	-0251300	(+)	-0253300	(+)
32	48,0	35,0	32,0	57,0		0,416	-0321300	(+)	-0323300	(+)
40	48,0	41,0	38,0	73,0		0,583	-0401300	(+)	-0403300	(+)
50	49,0	53,0	50,0	89,0		0,733	-0501300	(+)	-0503300	(+)
65	53,0	70,0	66,0	99,0		1,035	-0651300	(+)	-0653300	(+)
80	57,0	85,0	81,0	118,0		1,386	-0801300	(+)	-0803300	(+)
100	60,0	104,0	100,0	145,0		1,985	-1001300	(+)	-1003300	(+)

\*Deltaferrit < 3,0% - wird in Einzelteilen geliefert  
weitere Dichtungen siehe Artikel 10117

\*content of delta-ferrite < 3,0% - delivered in single components  
other gaskets see article 10117

HyCom-  
Klemmverbindung  
ASME  
DIN 11853-K

HyCom-  
clamp connection  
ASME  
DIN 11853-K



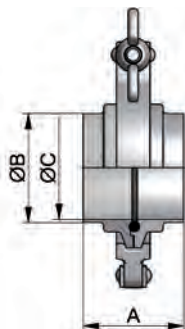
Art-Nr. 10138-							AISI 304/304L-1.4301/1.4307		AISI 316L-1.4404*	
DN	A	B	C	D	E	Gew.	Art.-Nr.	Preis	Art.-Nr.	Preis
mm	mm	mm	mm	mm	mm	kg	Ra<0,8 EPDM	EUR	Ra<0,8 EPDM	EUR
0,5"	44,0	12,7	9,4	43,0		0,256	-0121300	(+)	-0123300	(+)
0,75"	44,0	19,05	15,75	43,0		0,256	-0341300	(+)	-0343300	(+)
1"	44,0	25,4	22,1	57,0		0,416	-1001300	(+)	-1003300	(+)
1,5"	48,0	38,1	34,8	73,0		0,583	-1121300	(+)	-1123300	(+)
2"	49,0	50,8	47,5	89,0		0,733	-2001300	(+)	-2003300	(+)
2,5"	55,0	63,5	60,2	99,0		1,035	-2121300	(+)	-2123300	(+)
3"	57,0	76,2	72,9	118,0		1,385	-3001300	(+)	-3003300	(+)
4"	59,0	101,6	97,4	145,0		1,970	-4001300	(+)	-4003300	(+)

\*Deltaferrit < 3,0% - wird in Einzelteilen geliefert  
weitere Dichtungen siehe Artikel 10118

\*content of delta-ferrite < 3,0% - delivered in single components  
other gaskets see article 10118

HyCom-  
Klemmverbindung  
ISO  
DIN 11853-K

HyCom-  
clamp connection  
ISO  
DIN 11853-K



Art-Nr. 10139-							AISI 304/304L-1.4301/1.4307		AISI 316L-1.4404*	
DN	A	B	C	D	E	Gew.	Art.-Nr.	Preis	Art.-Nr.	Preis
mm	mm	mm	mm	mm	mm	kg	Ra<0,8 EPDM	EUR	Ra<0,8 EPDM	EUR
13,5	44,0	13,5	10,3	43,0		0,256	-0081300	(+)	-0083300	(+)
17,2	44,0	17,2	14,0	43,0		0,256	-0101300	(+)	-0103300	(+)
21,3	44,0	21,3	18,1	43,0		0,250	-0151300	(+)	-0153300	(+)
26,9	44,0	26,9	23,7	57,0		0,416	-0201300	(+)	-0203300	(+)
33,7	48,0	33,7	29,7	57,0		0,416	-0251300	(+)	-0253300	(+)
42,4	48,0	42,4	38,4	73,0		0,583	-0321300	(+)	-0323300	(+)
48,3	50,0	48,3	44,3	73,0		0,733	-0401300	(+)	-0403300	(+)
60,3	54,0	60,3	56,3	99,0		1,035	-0501300	(+)	-0503300	(+)
76,1	57,0	76,1	72,1	118,0		1,386	-0651300	(+)	-0653300	(+)
88,9	62,0	88,9	84,3	127,0		1,985	-0801300	(+)	-0803300	(+)

\*Deltaferrit < 3,0% - wird in Einzelteilen geliefert  
weitere Dichtungen siehe Artikel 10119  
(+) Preis auf Anfrage

\*content of delta-ferrite < 3,0% - delivered in single components  
other gaskets see article 10119  
(+) price on inquiry

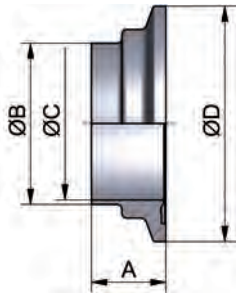




## Hygienearmaturen – HyCom-Armaturen

## hygienic fittings – HyCom-fittings

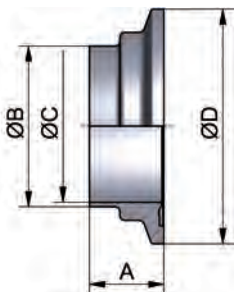
HyCom-Bundklemmstutzen DIN DIN 11853-BKS	Art.-Nr. 10173-							AISI 304/304L-1.4301/1.4307		AISI 316L-1.4404*	
	DN	A	B	C	D	E	Gew.	Art.-Nr.	Preis	Art.-Nr.	Preis
	mm	mm	mm	mm	mm	mm	kg	Ra<0,8	EUR	Ra<0,8	EUR
	10	22,0	13,0	10,0	34,0		0,060	-0101000	(+)	-0103000	(+)
	15	22,0	19,0	16,0	34,0		0,060	-0151000	(+)	-0153000	(+)
	20	22,0	23,0	20,0	50,5		0,140	-0201000	(+)	-0203000	(+)
HyCom-ferrule collar DIN DIN 11853-BKS	25	22,0	29,0	26,0	50,5		0,120	-0251000	(+)	-0253000	(+)
	32	24,0	35,0	32,0	50,5		0,120	-0321000	(+)	-0323000	(+)
	40	24,0	41,0	38,0	64,0		0,200	-0401000	(+)	-0403000	(+)
	50	24,5	53,0	50,0	77,5		0,240	-0501000	(+)	-0503000	(+)
	65	26,5	70,0	66,0	91,0		0,360	-0651000	(+)	-0653000	(+)
	80	28,5	85,0	81,0	106,0		0,480	-0801000	(+)	-0803000	(+)
	100	30,0	104,0	100,0	130,0		0,720	-1001000	(+)	-1003000	(+)



\*Deltaferritgehalt < 3,0%

\*content of delta-ferrite < 3,0%

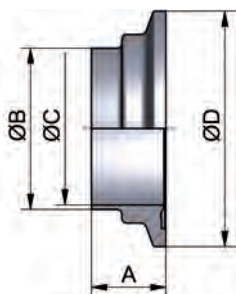
HyCom-Bundklemmstutzen ASME DIN 11853-BKS	Art.-Nr. 10174-							AISI 304/304L-1.4301/1.4307		AISI 316L-1.4404*	
	DN	A	B	C	D	E	Gew.	Art.-Nr.	Preis	Art.-Nr.	Preis
	mm	mm	mm	mm	mm	mm	kg	Ra<0,8	EUR	Ra<0,8	EUR
	0,5"	22,0	12,7	9,4	34,0		0,050	-0121000	(+)	-0123000	(+)
	0,75"	22,0	19,05	15,75	34,0		0,050	-0341000	(+)	-0343000	(+)
	1"	22,0	25,4	22,1	50,5		0,120	-1001000	(+)	-1003000	(+)
HyCom-ferrule collar ASME DIN 11853-BKS	1,5"	24,0	38,1	34,8	64,0		0,200	-1121000	(+)	-1123000	(+)
	2"	24,5	50,8	47,5	77,5		0,240	-2001000	(+)	-2003000	(+)
	2,5"	27,5	63,5	60,2	91,0		0,400	-2121000	(+)	-2123000	(+)
	3"	28,5	76,2	72,9	106,0		0,510	-3001000	(+)	-3003000	(+)
	4"	29,5	101,6	97,4	130,0		0,750	-4001000	(+)	-4003000	(+)



\*Deltaferritgehalt < 3,0%

\*content of delta-ferrite < 3,0%

HyCom-Bundklemmstutzen ISO DIN 11853-BKS	Art.-Nr. 10175-							AISI 304/304L-1.4301/1.4307		AISI 316L-1.4404*	
	DN	A	B	C	D	E	Gew.	Art.-Nr.	Preis	Art.-Nr.	Preis
	mm	mm	mm	mm	mm	mm	kg	Ra<0,8	EUR	Ra<0,8	EUR
	13,5	22,0	13,5	10,3	34,0		0,050	-0081000	(+)	-0083000	(+)
	17,2	22,0	17,2	14,0	34,0		0,050	-0101000	(+)	-0103000	(+)
	21,3	22,0	21,3	18,1	34,0		0,050	-0151000	(+)	-0153000	(+)
HyCom-ferrule collar ISO DIN 11853-BKS	26,9	22,0	26,9	23,7	50,5		0,120	-0201000	(+)	-0203000	(+)
	33,7	24,0	33,7	29,7	50,5		0,120	-0251000	(+)	-0253000	(+)
	42,4	24,0	42,4	38,4	64,0		0,200	-0321000	(+)	-0323000	(+)
	48,3	25,0	48,3	44,3	64,0		0,200	-0401000	(+)	-0403000	(+)
	60,3	27,0	60,3	56,3	91,0		0,400	-0501000	(+)	-0503000	(+)
	76,1	28,5	76,1	72,1	106,0		0,510	-0651000	(+)	-0653000	(+)
	88,9	31,0	88,9	84,3	119,0		0,600	-0801000	(+)	-0803000	(+)



\*Deltaferritgehalt < 3,0%

\*content of delta-ferrite < 3,0%

(+) Preis auf Anfrage

(+) price on inquiry

**Hygienearmaturen – HyCom-Armaturen**
**hygienic fittings – HyCom-fittings**
**Art.-Nr. 10192-**

AISI 316L-1.4404

DN	A	B	C	D	E	Gew.	Art.-Nr.	Preis
mm	mm	mm	mm	mm	mm	kg	Ra < 0,8	EUR
10	13,0		34,0			0,060	-0103000	26,50
15	13,0		34,0			0,060	-0153000	29,00
20	13,0		50,5			0,160	-0203000	29,70
25	13,0		50,5			0,160	-0253000	31,10
32	13,0		50,5			0,160	-0323000	31,90
40	13,0		64,0			0,260	-0403000	34,60
50	15,0		77,5			0,360	-0503000	39,70
65	15,0		91,0			0,620	-0653000	49,40
80	15,0		106,0			0,900	-0803000	57,50
100	15,0		130,0			1,640	-1003000	76,10

Deltaferritgehalt &lt; 3,0%

content of delta-ferrite &lt; 3,0%

**Art.-Nr. 10193-**

DN	A	B	C	D	E	Gew.	Art.-Nr.	Preis
mm	mm	mm	mm	mm	mm	kg		EUR
0,5"	13,0		34,0			0,060		
0,75"	13,0		34,0			0,060		
1"	13,0		50,5			0,160		
1,5"	13,0		64,0			0,260		
2"	15,0		77,5			0,300		
2,5"	15,0		91,0			0,400		
3"	15,0		106,0			0,580		
4"	15,0		130,0			0,900		

siehe PharmCom-Armaturen  
 see PharmCom-fittings

Verfügbar in AISI 316L-1.4435

andere Werkstoffe auf Anfrage (stückzahlabhängig)

available in AISI 316L-1.4435

other materials on request (depending on quantity)

**Art.-Nr. 10194-**

DN	A	B	C	D	E	Gew.	Art.-Nr.	Preis
mm	mm	mm	mm	mm	mm	kg		EUR
13,5	13,0		34,0			0,060		
17,2	13,0		34,0			0,060		
21,3	13,0		34,0			0,060		
26,9	13,0		50,5			0,160		
33,7	13,0		50,5			0,160		
42,4	13,0		64,0			0,260		
48,3	13,0		64,0			0,260		
60,3	15,0		91,0			0,620		
76,1	15,0		106,0			0,900		
88,9	15,0		119,0			1,510		

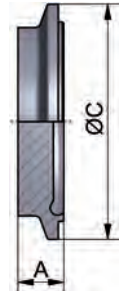
siehe PharmCom-Armaturen  
 see PharmCom-fittings

Verfügbar in AISI 316L-1.4435

andere Werkstoffe auf Anfrage (stückzahlabhängig)

available in AISI 316L-1.4435

other materials on request (depending on quantity)

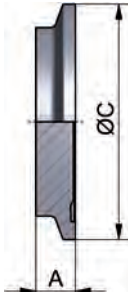
**HyCom-Blindnutklemmstutzen DIN 11853-BNKS**
**HyCom-blind ferrule groove DIN 11853-BNKS**

**HyCom-Blindnutklemmstutzen ASME DIN 11853-BNKS**
**HyCom-blind ferrule groove ASME DIN 11853-BNKS**

**HyCom-Blindnutklemmstutzen ISO DIN 11853-BNKS**
**HyCom-blind ferrule groove ISO DIN 11853-BNKS**


## Hygienearmaturen – HyCom-Armaturen


## hygienic fittings – HyCom-fittings

HyCom-Blindbündelklemmstutzen DIN DIN 11853-BBKS	Art.-Nr. 10195-							AISI 316L-1.4404	
	DN	A	B	C	D	E	Gew.	Art.-Nr.	Preis
	mm	mm	mm	mm	mm	mm	kg	Ra<0,8	EUR
	10	11,5		34,0			0,060	-0103000	26,20
	15	11,5		34,0			0,060	-0153000	28,70
	20	11,5		50,5			0,160	-0203000	29,30
HyCom-blind ferrule collar DIN DIN 11853-BBKS	25	11,5		50,5			0,160	-0253000	30,70
	32	11,5		50,5			0,160	-0323000	31,20
	40	11,5		64,0			0,260	-0403000	33,80
	50	13,5		77,5			0,360	-0503000	38,80
	65	13,5		91,0			0,620	-0653000	48,40
	80	13,5		106,0			0,900	-0803000	56,00
	100	13,5		130,0			1,640	-1003000	74,30



Deltaferritgehalt < 3,0% content of delta-ferrite < 3,0%


HyCom-Blindbündelklemmstutzen ASME DIN 11853-BBKS	Art.-Nr. 10196-							Art.-Nr.	Preis EUR
	DN	A	B	C	D	E	Gew.		
	mm	mm	mm	mm	mm	mm	kg		
	0,5"	11,5		34,0			0,060		
	0,75"	11,5		34,0			0,060		
	1"	11,5		50,5			0,160		
HyCom-blind ferrule collar ASME DIN 11853-BBKS	1,5"	11,5		64,0			0,260		
	2"	13,5		77,5			0,300		
	2,5"	13,5		91,0			0,400		
	3"	13,5		106,0			0,580		
	4"	13,5		130,0			0,900		



Verfügbar in AISI 316L-1.4435 available in AISI 316L-1.4435  
andere Werkstoffe auf Anfrage (stückzahlabhängig) other materials on request (depending on quantity)

siehe PharmCom-Armaturen  
see PharmCom-fittings

HyCom-Blindbündelklemmstutzen ISO DIN 11853-BBKS	Art.-Nr. 10197-							Art.-Nr.	Preis EUR
	DN	A	B	C	D	E	Gew.		
	mm	mm	mm	mm	mm	mm	kg		
	13,5	11,5		34,0			0,060		
	17,2	11,5		34,0			0,060		
	21,3	11,5		34,0			0,060		
HyCom-blind ferrule collar ISO DIN 11853-BBKS	26,9	11,5		50,5			0,160		
	33,7	11,5		50,5			0,160		
	42,4	11,5		64,0			0,260		
	48,3	11,5		64,0			0,260		
	60,3	13,5		91,0			0,620		
	76,1	13,5		106,0			0,900		
	88,9	13,5		119,0			1,510		



Verfügbar in AISI 316L-1.4435 available in AISI 316L-1.4435  
andere Werkstoffe auf Anfrage (stückzahlabhängig) other materials on request (depending on quantity)

siehe PharmCom-Armaturen  
see PharmCom-fittings

**Hygienearmaturen – HyCom-Armaturen**
**hygienic fittings – HyCom-fittings**
**Art.-Nr. 10117-**

DN	A	B	C	D	E	Gew.	Art.-Nr.		Art.-Nr.		Art.-Nr.	
							EPDM	Preis	FKM	Preis	HNBR	Preis
mm	mm	mm	mm	mm	mm	kg		EUR		EUR		EUR
10	3,5	12,0				0,001	-0100300	5,70	-0100400	10,10	-0100700	10,10
15	3,5	18,0				0,001	-0150300	5,70	-0150400	10,10	-0150700	10,10
20	3,5	22,0				0,001	-0200300	6,15	-0200400	11,05	-0200700	11,05
25	3,5	28,0				0,001	-0250300	6,65	-0250400	12,00	-0250700	12,00
32	5,0	34,0				0,002	-0320300	8,85	-0320400	15,95	-0320700	15,95
40	5,0	40,0				0,003	-0400300	6,75	-0400400	12,80	-0400700	12,80
50	5,0	52,0				0,003	-0500300	7,10	-0500400	13,25	-0500700	13,25
65	5,0	68,0				0,005	-0650300	7,80	-0650400	14,35	-0650700	14,35
80	5,0	83,0				0,006	-0800300	11,80	-0800400	21,30	-0800700	21,30
100	5,0	102,0				0,007	-1000300	13,10	-1000400	22,55	-1000700	22,55
125	5,0	127,0				0,008	-1250300	19,80	-1250400	48,80	-1250700	48,80
150	5,0	152,0				0,008	-1500300	23,60	-1500400	71,80	-1500700	71,80

Dichtungen gem. FDA

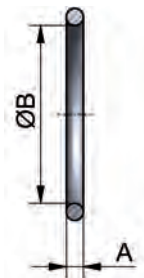
HyCom O-Ring identisch mit PharmCom O-Ring

Werkstoff FFKM auf Anfrage

gaskets according to FDA

HyCom o-ring identical with PharmCom o-ring

material FFKM on inquiry

**HyCom-O-Ring  
DIN  
DIN 11853-R**
**HyCom-O-Ring  
DIN  
DIN 11853-R**

**Art.-Nr. 10118-**

DN	A	B	C	D	E	Gew.	Art.-Nr.		Art.-Nr.		Art.-Nr.	
							EPDM	Preis	FKM	Preis	HNBR	Preis
mm	mm	mm	mm	mm	mm	kg		EUR		EUR		EUR
0,5"	3,5	12,0				0,001	siehe DIN DN 10	5,70	siehe DIN DN 10	10,10	siehe DIN DN 10	10,10
0,75"	3,5	18,0				0,001	siehe DIN DN 15	5,70	siehe DIN DN 15	10,10	siehe DIN DN 15	10,10
1"	3,5	24,0				0,001	-1000300	6,65	-1000400	12,00	-1000700	12,00
1,5"	5,0	37,0				0,002	-1120300	6,75	-1120400	12,80	-1120700	12,80
2"	5,0	50,0				0,003	-2000300	7,10	-2000400	13,25	-2000700	13,25
2,5"	5,0	62,0				0,004	-2120300	7,80	-2120400	14,35	-2120700	14,35
3"	5,0	75,0				0,006	-3000300	11,80	-3000400	21,30	-3000700	21,30
4"	5,0	100,0				0,008	-4000300	13,10	-4000400	22,55	-4000700	22,55

Dichtungen gem. FDA

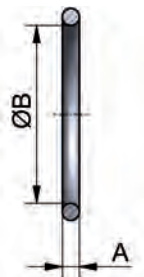
HyCom O-Ring identisch mit PharmCom O-Ring

Werkstoff FFKM auf Anfrage

gaskets according to FDA

HyCom o-ring identical with PharmCom o-ring

material FFKM on inquiry

**HyCom-O-Ring  
ASME  
DIN 11853-R**
**HyCom-O-Ring  
ASME  
DIN 11853-R**

**Art.-Nr. 10119-**

DN	A	B	C	D	E	Gew.	Art.-Nr.		Art.-Nr.		Art.-Nr.	
							EPDM	Preis	FKM	Preis	HNBR	Preis
mm	mm	mm	mm	mm	mm	kg		EUR		EUR		EUR
13,5	3,5	12,0				0,001	siehe DIN DN 10	5,70	siehe DIN DN 10	10,10	siehe DIN DN 10	10,10
17,2	3,5	16,0				0,001	-0100300	5,70	-0100400	10,10	-0100700	10,10
21,3	3,5	20,0				0,001	-0150300	5,70	-0150400	10,10	-0150700	10,10
26,9	3,5	26,0				0,001	-0200300	6,15	-0200400	11,05	-0200700	11,05
33,7	5,0	32,0				0,002	-0250300	6,65	-0250400	12,00	-0250700	12,00
42,4	5,0	40,5				0,003	-0320300	8,85	-0320400	15,95	-0320700	15,95
48,3	5,0	46,5				0,003	-0400300	6,75	-0400400	12,80	-0400700	12,80
60,3	5,0	58,5				0,004	-0500300	7,10	-0500400	13,25	-0500700	13,25
76,1	5,0	73,5				0,005	-0650300	7,90	-0650400	14,80	-0650700	14,80
88,9	5,0	86,5				0,006	-0800300	12,80	-0800400	22,40	-0800700	22,40
114,3	5,0	111,0				0,008	-1000300	13,50	-1000400	24,60	-1000700	24,60

Dichtungen gem. FDA

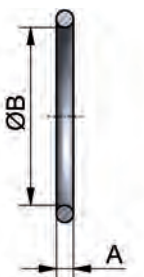
HyCom O-Ring identisch mit PharmCom O-Ring

Werkstoff FFKM auf Anfrage

gaskets according to FDA

HyCom o-ring identical with PharmCom o-ring

material FFKM on inquiry

**HyCom-O-Ring  
ISO  
DIN 11853-R**
**HyCom-O-Ring  
ISO  
DIN 11853-R**


## Hygienearmaturen – HyCom-Armaturen

## hygienic fittings – HyCom-fittings

Montagesatz  
Flanschverbindung  
DIN 11864 und DIN  
11853

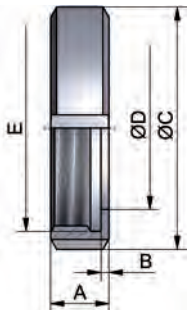
assembly flange  
connection  
DIN 11864 and  
DIN 11853



Art.-Nr. 10170-							A2/A4	
DN	A	B	C	D	E	Gew.	Art.-Nr.	Preis
mm	mm	mm	mm	Schraube	Mutter	kg		EUR
10-50/0,5-2"/13,5-60,3				4xM8x30 DIN933	4xM8 DIN934	0,080	-0102000	8,20
65/2,5"				8xM8x30 DIN933	8xM8 DIN934	0,160	-0652000	8,80
3"/76,1				8xM10x35 DIN933	8xM10 DIN934	0,320	-0762000	10,30
80/88,9				8xM10x35 DIN933	8xM10 DIN934	0,320	-0802000	10,30
100-125/4"/114,3				8xM10x40 DIN933	8xM10 DIN934	0,340	-1002000	10,60
150				8xM12x50 DIN933	8xM12 DIN934	0,510	-1502000	12,70

Nutmutter F für  
DIN 11864 und  
DIN 11853

nut for  
DIN 11864 and  
DIN 11853



Art.-Nr. 11000-							AISI 304L-1.4307		AISI 316L-1.4404	
DN	A	B	C	D	E	Gew.	Art.-Nr.	Preis	Art.-Nr.	Preis
mm	mm	mm	mm	mm	mm	kg	blank	EUR	blank	EUR
10/0,5"/13,5	18,0	3,0	38,0	19,0	Rd28x1/8	0,060	-0101	6,50	-0103	8,80
15/0,75"/17,2	18,0	3,0	44,0	25,0	Rd34x1/8	0,080	-0151	8,45	-0153	10,90
20/21,3	20,0	3,0	54,0	31,0	Rd44x1/6	0,110	-0201	8,15	-0203	11,10
25/1"/26,9	21,0	3,0	63,0	36,0	Rd52x1/6	0,160	-0251	7,95	-0253	10,30
32/33,7	21,0	3,0	70,0	42,0	Rd58x1/6	0,190	-0321	9,15	-0323	11,50
40/1,5"/42,4	21,0	3,0	78,0	49,0	Rd65x1/6	0,240	-0401	8,95	-0403	12,50
50/2"/48,3	22,0	3,0	92,0	62,0	Rd78x1/6	0,320	-0501	10,65	-0503	14,00
65/2,5"/60,3	25,0	4,0	112,0	80,0	Rd95x1/6	0,530	-0651	16,50	-0653	21,75
80/3"/76,1	29,0	4,0	127,0	94,0	Rd110x1/4	0,720	-0801	25,70	-0803	33,25
100/4"/88,9	31,0	5,0	148,0	115,0	Rd130x1/4	0,970	-1001	34,65	-1003	45,95
125/114,3	35,0	5,0	178,0	138,0	Rd160x1/4	1,380	-1251	61,30	-1253	89,10

Rd: Rundgewinde - auf Anfrage mit APZ 3.1/AD2000-W2

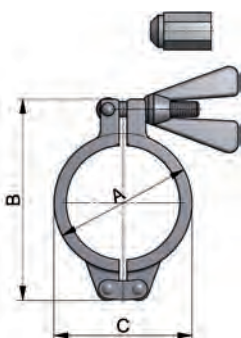
Rd: round thread - with certificate 3.1/AD2000-W2 on inquiry

Rabatt gem. Kapitel Verschraubungen

discount acc. chapter screwed pipe connections

Klammer (massiv) für  
DIN 11864/11853  
und DIN 32676

clamp heavy type for  
DIN 11864/11853  
and DIN 32676



Art.-Nr. 1880-							AISI 304-1.4308	
DN	DN	A	B	C	D	Gew.	Art.-Nr.	Preis
DN-DIN11864-3/11853-3	DN-TC	mm	mm	mm	mm	kg	poliert	EUR
	0,5-0,75"/13,5-17,2	28,0	51,0	33,0	25,0	0,150	-10341	47,50
10-15/0,5-0,75"/13,5-21,3	10-20	37,0	70,0	43,0	34,0	0,175	-00201	47,80
20-32/1"/26,9-33,7	25-40/1-1,5"/21,3-33,7	53,0	90,0	57,0	50,5	0,220	-11121	42,35
40/1,5"/42,4-48,3	50/2"/42,4-48,3	67,0	106,0	73,0	64,0	0,300	-12001	47,55
50/2"	2,5"/60,3	80,0	120,0	89,0	77,5	0,320	-12121	49,05
65/2,5"/60,3	65/3"/76,1	94,0	135,0	99,0	91,0	0,340	-13001	50,40
80/3"/76,1	80/88,9	109,0	149,0	118,0	106,0	0,430	-00801	50,40
88,9	100/4"	122,0	162,0	127,0	119,0	0,370	-14001	51,20
100/4"	114,3	134,0	180,0	145,0	130,0	0,580	-14121	88,90
114,3		149,0	210,0	160,0	144,4	0,520	-15001	121,30

auch mit Sechskantmutter erhältlich

also available with hexagonal nut

D: für Flanschdurchmesser

D: for diameter of flange

Rabatt gem. Kapitel Clampverbindungen

discount acc. chapter clamp pipe connections

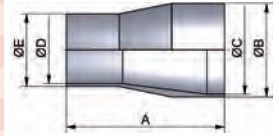
**Hygienearmaturen – HyCom-Armaturen**
**hygienic fittings – HyCom-fittings**

Art.-Nr. 10201-							AISI 316L-1.4404			
DN	A	B	C	D	E	Gew.	Art.-Nr.	Preis	Art.-Nr.	Preis
mm	mm	mm	mm	mm	mm	kg	Ra<0,8	EUR	Ra<0,4	EUR
15-10	60,0	19,0	16,0	10,0	13,0	0,060	-0158010	70,25	-0159010	95,20
20-10	60,0	23,0	20,0	10,0	13,0	0,040	-0208010	81,40	-0209010	110,45
20-15	60,0	23,0	20,0	16,0	19,0	0,060	-0208015	73,15	-0209015	99,30
25-10	70,0	29,0	26,0	10,0	13,0	0,120	-0258010	100,95	-0259010	116,70
25-15	70,0	29,0	26,0	16,0	19,0	0,120	-0258015	81,30	-0259015	103,00
25-20	70,0	29,0	26,0	20,0	23,0	0,100	-0258020	74,10	-0259020	93,65
32-15	80,0	35,0	32,0	16,0	19,0	0,160	-0328015	93,80	-0329015	111,80
32-20	80,0	35,0	32,0	20,0	23,0	0,140	-0328020	82,75	-0329020	100,55
32-25	80,0	35,0	32,0	26,0	29,0	0,140	-0328025	78,55	-0329025	96,60
40-15	90,0	41,0	38,0	16,0	19,0	0,260	-0408015	93,80	-0409015	116,70
40-20	90,0	41,0	38,0	20,0	23,0	0,160	-0408020	82,75	-0409020	105,40
40-25	90,0	41,0	38,0	26,0	29,0	0,200	-0408025	78,55	-0409025	102,80
40-32	90,0	41,0	38,0	32,0	35,0	0,160	-0408032	78,55	-0409032	102,80
50-15	90,0	53,0	50,0	16,0	19,0	0,500	-0508015	115,30	-0509015	130,05
50-20	90,0	53,0	50,0	20,0	23,0	0,500	-0508020	108,60	-0509020	122,20
50-25	90,0	53,0	50,0	26,0	29,0	0,360	-0508025	103,70	-0509025	111,70
50-32	90,0	53,0	50,0	32,0	35,0	0,400	-0508032	105,05	-0509032	107,80
50-40	90,0	53,0	50,0	38,0	41,0	0,280	-0508040	81,85	-0509040	104,35
65-25	110,0	70,0	66,0	26,0	29,0	0,960	-0658025	181,65	-0659025	208,35
65-32	110,0	70,0	66,0	32,0	35,0	0,780	-0658032	171,95	-0659032	198,65
65-40	110,0	70,0	66,0	38,0	41,0	0,580	-0658040	162,10	-0659040	189,15
65-50	110,0	70,0	66,0	50,0	53,0	0,500	-0658050	157,75	-0659050	184,45
80-40	110,0	85,0	81,0	38,0	41,0	0,600	-0808040	248,85	-0809040	284,10
80-50	110,0	85,0	81,0	50,0	53,0	0,840	-0808050	230,55	-0809050	266,15
80-65	110,0	85,0	81,0	66,0	70,0	0,780	-0808065	220,80	-0809065	256,50
100-50	135,0	104,0	100,0	50,0	53,0	2,220	-1008050	354,00	-1009050	477,55
100-65	135,0	104,0	100,0	66,0	70,0	1,280	-1008065	331,15	-1009065	446,20
100-80	135,0	104,0	100,0	81,0	85,0	1,160	-1008080	301,55	-1009080	403,25

Deltaferritgehalt < 3,0% content of delta-ferrite < 3,0%

**HyCom-  
Reduzierstück  
DIN  
DIN 11865-RK-A**

**HyCom-reducer  
DIN  
DIN 11865-RK-A**

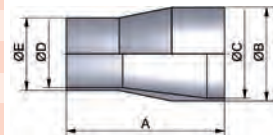


Art.-Nr. 10202-							AISI 316L-1.4404			
DN	A	B	C	D	E	Gew.	Art.-Nr.	Preis	Art.-Nr.	Preis
mm	mm	mm	mm	mm	mm	kg	Ra<0,8	EUR	Ra<0,4	EUR
0,75-0,5"	53,98	19,05	15,75	9,4	12,7	0,050	-0348012	76,75	-0349012	105,00
1-0,5"	63,50	25,4	22,1	9,4	12,7	0,060	-1008012	85,35	-1009012	115,80
1-0,75"	53,98	25,4	22,1	15,75	19,05	0,060	-1008034	77,80	-1009034	105,45
1,5-0,75"	76,20	38,1	34,8	15,75	19,05	0,260	-1128034	86,90	-1129034	117,75
1,5-1"	63,50	38,1	34,8	22,1	25,4	0,260	-1128100	73,45	-1129100	99,55
2-1"	85,73	50,8	47,5	22,1	25,4	0,420	-2008100	88,00	-2009100	119,40
2-1,5"	63,50	50,8	47,5	34,8	38,1	0,260	-2008112	84,25	-2009112	114,30
2,5-1,5"	85,73	63,5	60,2	34,8	38,1	0,400	-2128112	118,95	-2129112	158,90
2,5-2"	63,50	63,5	60,2	47,5	50,8	0,380	-2128200	115,95	-2129200	156,50
3-1,5"	107,95	76,2	72,9	34,8	38,1	0,760	-3008112	197,50	-3009112	269,10
3-2"	85,73	76,2	72,9	47,5	50,8	0,660	-3008200	182,90	-3009200	249,35
3-2,5"	66,68	76,2	72,9	60,2	63,5	0,520	-3008212	179,30	-3009212	243,00
4-2"	130,18	101,6	97,4	47,5	50,8	1,420	-4008200	318,80	-4009200	429,65
4-2,5"	107,95	101,6	97,4	60,2	63,5	1,260	-4008212	298,70	-4009212	404,25
4-3"	98,43	101,6	97,4	72,9	76,2	1,100	-4008300	285,80	-4009300	387,75

Deltaferritgehalt < 3,0% content of delta-ferrite < 3,0%

**HyCom-  
Reduzierstück  
ASME  
DIN 11865-RK-C**

**HyCom-reducer  
ASME  
DIN 11865-RK-C**











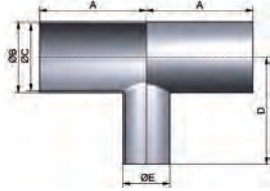






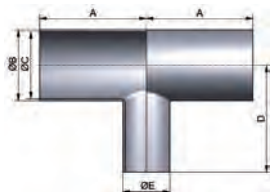
## Hygienearmaturen – HyCom-Armaturen

## hygienic fittings – HyCom-fittings

HyCom- Red-T-Stück lang DIN	Art.-Nr. 10409-							AISI 316L-1.4404			
	DN	A	B	C	D	E	Gew.	Art.-Nr.	Preis	Art.-Nr.	Preis
	mm	mm	mm	mm	mm	mm	kg	Ra<0,8	EUR	Ra<0,4	EUR
DIN 11865-T-A	15-10	35,0	19,0	16,0	35,0	13,0	0,060	-0158010	68,65	-0159010	104,35
	20-10	40,0	23,0	20,0	40,0	13,0	0,080	-0208010	68,65	-0209010	103,50
HyCom- reduced tee long DIN	20-15	40,0	23,0	20,0	40,0	19,0	0,100	-0208015	68,65	-0209015	103,50
	25-10	50,0	29,0	26,0	50,0	13,0	0,120	-0258010	70,35	-0259010	106,85
DIN 11865-T-A	25-15	50,0	29,0	26,0	50,0	19,0	0,140	-0258015	70,35	-0259015	106,85
	25-20	50,0	29,0	26,0	50,0	23,0	0,140	-0258020	70,35	-0259020	106,85
	32-15	55,0	35,0	32,0	55,0	19,0	0,180	-0328015	75,95	-0329015	114,55
	32-20	55,0	35,0	32,0	55,0	23,0	0,180	-0328020	75,95	-0329020	114,55
	32-25	55,0	35,0	32,0	55,0	29,0	0,180	-0328025	75,95	-0329025	114,55
	40-15	60,0	41,0	38,0	60,0	19,0	0,200	-0408015	85,55	-0409015	122,55
	40-20	60,0	41,0	38,0	60,0	23,0	0,240	-0408020	85,55	-0409020	122,55
	40-25	60,0	41,0	38,0	60,0	29,0	0,220	-0408025	85,55	-0409025	122,55
	40-32	60,0	41,0	38,0	60,0	35,0	0,240	-0408032	85,55	-0409032	122,55
	50-15	80,0	53,0	50,0	80,0	19,0	0,360	-0508015	90,00	-0509015	135,35
	50-20	80,0	53,0	50,0	80,0	23,0	0,380	-0508020	90,00	-0509020	135,35
	50-25	80,0	53,0	50,0	80,0	29,0	0,400	-0508025	90,00	-0509025	135,35
	50-32	80,0	53,0	50,0	80,0	35,0	0,340	-0508032	90,00	-0509032	135,35
	50-40	80,0	53,0	50,0	80,0	41,0	0,420	-0508040	90,00	-0509040	135,35
	65-25	105,0	70,0	66,0	80,0	29,0	0,780	-0658025	133,75	-0659025	189,90
	65-32	105,0	70,0	66,0	80,0	35,0	0,660	-0658032	133,75	-0659032	189,90
	65-40	105,0	70,0	66,0	80,0	41,0	0,820	-0658040	133,75	-0659040	189,90
	65-50	105,0	70,0	66,0	80,0	53,0	0,840	-0658050	133,75	-0659050	189,90
	80-40	130,0	85,0	81,0	105,0	41,0	1,200	-0808040	179,70	-0809040	179,70
	80-50	130,0	85,0	81,0	105,0	53,0	0,900	-0808050	179,70	-0809050	179,70
	80-65	130,0	85,0	81,0	105,0	70,0	1,380	-0808065	179,70	-0809065	179,70
	100-50	155,0	104,0	100,0	130,0	53,0	1,880	-1008050	230,60	-1009050	310,50
	100-65	155,0	104,0	100,0	130,0	70,0	2,000	-1008065	230,60	-1009065	310,50
	100-80	155,0	104,0	100,0	130,0	85,0	2,020	-1008080	230,60	-1009080	310,50

Deltaferritgehalt < 3,0%

content of delta-ferrite < 3,0%

HyCom- Red- T-Stück lang ASME	Art.-Nr. 10410-							AISI 316L-1.4404			
	DN	A	B	C	D	E	Gew.	Art.-Nr.	Preis	Art.-Nr.	Preis
	mm	mm	mm	mm	mm	mm	kg	Ra<0,8	EUR	Ra<0,4	EUR
DIN 11865-T-C	0,75-0,5"	50,8	19,05	15,75	50,8	12,7	0,100	-0348012	70,55	-0349012	107,15
	1-0,5"	54,0	25,4	22,1	54,0	12,7	0,120	-1008012	73,00	-1009012	110,80
HyCom- reduced tee long ASME	1-0,75"	54,0	25,4	22,1	54,0	19,05	0,280	-1008034	73,00	-1009034	110,80
	1,5-0,75"	60,3	38,1	34,8	60,3	19,05	0,220	-1128034	89,20	-1129034	127,25
DIN 11865-T-C	1,5-1"	60,3	38,1	34,8	60,3	25,4	0,240	-1128100	89,20	-1129100	127,25
	2-1"	73,0	50,8	47,5	66,7	25,4	0,320	-2008100	100,95	-2009100	143,65
	2-1,5"	73,0	50,8	47,5	66,7	38,1	0,360	-2008112	100,95	-2009112	143,65
	2,5-1"	79,4	63,5	60,2	73,0	25,4	0,500	-2128100	131,90	-2129100	188,45
	2,5-1,5"	79,4	63,5	60,2	73,0	38,1	0,500	-2128112	131,90	-2129112	188,45
	2,5-2"	79,4	63,5	60,2	73,0	50,8	0,530	-2128200	131,90	-2129200	188,45
	3-1,5"	85,7	76,2	72,9	79,4	38,1	0,780	-3008112	185,70	-3009112	244,20
	3-2"	85,7	76,2	72,9	79,4	50,8	0,820	-3008200	185,70	-3009200	244,20
	3-2,5"	85,7	76,2	72,9	79,4	63,5	1,380	-3008212	185,70	-3009212	244,20
	4-2"	104,8	101,6	97,4	98,4	50,8	1,880	-4008200	243,35	-4009200	316,90
	4-2,5"	104,8	101,6	97,4	98,4	63,5	2,000	-4008212	243,35	-4009212	316,90
	4-3"	104,8	101,6	97,4	98,4	76,2	2,020	-4008300	243,35	-4009300	316,90

Deltaferritgehalt < 3,0%

content of delta-ferrite < 3,0%



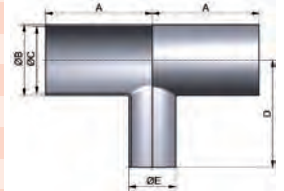
Hygienearmaturen – HyCom-Armaturen

hygienic fittings – HyCom-fittings

Art.-Nr. 10411-							AISI 316L-1.4404			
DN	A	B	C	D	E	Gew.	Art.-Nr.	Preis	Art.-Nr.	Preis
mm	mm	mm	mm	mm	mm	kg	Ra<0,8	EUR	Ra<0,4	EUR
17,2-13,5	34,0	17,2	14,0	34,0	13,5	0,060	-0108008	78,15	-0109008	117,35
21,3-13,5	36,0	21,3	18,1	36,0	13,5	0,080	-0158008	79,25	-0159008	119,30
21,3-17,2	36,0	21,3	18,1	36,0	17,2	0,080	-0158010	79,25	-0159010	119,30
26,9-13,5	55,0	26,9	23,7	55,0	13,5	0,140	-0208008	79,65	-0209008	120,15
26,9-17,2	55,0	26,9	23,7	55,0	17,2	0,140	-0208010	79,65	-0209010	120,15
26,9-21,3	55,0	26,9	23,7	55,0	21,3	0,140	-0208015	79,65	-0209015	120,15
33,7-17,2	60,0	33,7	29,7	60,0	17,2	0,220	-0258010	82,10	-0259010	123,25
33,7-21,3	60,0	33,7	29,7	60,0	21,3	0,220	-0258015	82,10	-0259015	123,25
33,7-26,9	60,0	33,7	29,7	60,0	26,9	0,220	-0258020	82,10	-0259020	123,25
42,4-21,3	65,0	42,4	38,4	65,0	21,3	0,320	-0328015	84,90	-0329015	130,95
42,4-26,9	65,0	42,4	38,4	65,0	26,9	0,320	-0328020	84,90	-0329020	130,95
42,4-33,7	65,0	42,4	38,4	65,0	33,7	0,320	-0328025	84,90	-0329025	130,95
48,3-21,3	65,0	48,3	44,3	65,0	21,3	0,360	-0408015	88,35	-0409015	135,85
48,3-26,9	65,0	48,3	44,3	65,0	26,9	0,340	-0408020	88,35	-0409020	135,85
48,3-33,7	65,0	48,3	44,3	65,0	33,7	0,360	-0408025	88,35	-0409025	135,85
48,3-42,4	65,0	48,3	44,3	65,0	42,4	0,400	-0408032	88,35	-0409032	135,85
60,3-21,3	90,0	60,3	56,3	90,0	21,3	0,600	-0508015	120,70	-0509015	162,65
60,3-26,9	90,0	60,3	56,3	90,0	26,9	0,620	-0508020	120,70	-0509020	162,65
60,3-33,7	90,0	60,3	56,3	90,0	33,7	0,620	-0508025	120,70	-0509025	162,65
60,3-42,4	90,0	60,3	56,3	90,0	42,4	0,740	-0508032	120,70	-0509032	162,65
60,3-48,3	90,0	60,3	56,3	90,0	48,3	0,760	-0508040	120,70	-0509040	162,65
76,1-33,7	110,0	76,1	72,1	90,0	33,7	0,980	-0658025	150,50	-0659025	194,20
76,1-42,4	110,0	76,1	72,1	90,0	42,4	0,980	-0658032	150,50	-0659032	194,20
76,1-48,3	110,0	76,1	72,1	90,0	48,3	1,000	-0658040	150,50	-0659040	194,20
76,1-60,3	110,0	76,1	72,1	90,0	60,3	1,020	-0658050	150,50	-0659050	194,20
88,9-48,3	130,0	88,9	84,3	110,0	48,3	1,260	-0808040	206,00	-0809040	263,75
88,9-60,3	130,0	88,9	84,3	110,0	60,3	1,300	-0808050	206,00	-0809050	263,75
88,9-76,1	130,0	88,9	84,3	110,0	76,1	1,700	-0808065	206,00	-0809065	263,75
114,3-60,3	160,0	114,3	109,7	130,0	60,3	2,360	-1008050	264,45	-1009050	343,70
114,3-76,1	160,0	114,3	109,7	130,0	76,1	0,400	-1008065	264,45	-1009065	343,70
114,3-88,9	160,0	114,3	109,7	130,0	88,9	2,560	-1008080	264,45	-1009080	343,70

HyCom-Red-T-St.  
lang ISO  
DIN 11865-T-B

HyCom-reduced tee  
long ISO  
DIN 11865-T-B



Deltaferritgehalt < 3,0%

content of delta-ferrite < 3,0%

## Hygienearmaturen – HyCom-Armaturen hygienic fittings – HyCom-fittings

HyCom-T-Stück kurz		Art.-Nr. 10405-						AISI 316L-1.4404				
DIN		DN	A	B	C	D	E	Gew.	Art.-Nr.	Preis	Art.-Nr.	Preis
DIN 11865-TK-A		mm	mm	mm	mm	mm	mm	kg	Ra<0,8	EUR	Ra<0,4	EUR
HyCom-tee short		10	35,0	13,0	10,0	7,5		0,020	-0108000	33,60	-0109000	(+)
DIN		15	35,0	19,0	16,0	11,0		0,030	-0158000	33,90	-0159000	(+)
DIN 11865-TK-A		20	40,0	23,0	20,0	13,0		0,050	-0208000	34,10	-0209000	(+)
		25	50,0	29,0	26,0	16,0		0,080	-0258000	35,40	-0259000	(+)
		32	55,0	35,0	32,0	19,5		0,110	-0328000	38,70	-0329000	(+)
		40	60,0	41,0	38,0	23,0		0,150	-0408000	40,00	-0409000	(+)
		50	80,0	53,0	50,0	30,0		0,240	-0508000	44,50	-0509000	(+)
		65	105,0	70,0	66,0	40,0		0,480	-0658000	63,30	-0659000	(+)
		80	130,0	85,0	81,0	47,5		0,650	-0808000	88,30	-0809000	(+)
		100	155,0	104,0	100,0	58,0		0,910	-1008000	116,10	-1009000	(+)



Deltaferritgehalt < 3,0%

content of delta-ferrite < 3,0%

HyCom-T-Stück kurz		Art.-Nr. 10406-						AISI 316L-1.4404				
ASME		DN	A	B	C	D	E	Gew.	Art.-Nr.	Preis	Art.-Nr.	Preis
DIN 11865-TK-C		mm	mm	mm	mm	mm	mm	kg	Ra<0,8	EUR	Ra<0,4	EUR
HyCom-tee short		0,5"	47,6	12,7	9,4	7,5		0,040	-0128000	35,90	-0129000	(+)
ASME		0,75"	50,8	19,05	15,75	11,0		0,080	-0348000	36,10	-0349000	(+)
DIN 11865-TK-C		1"	54,0	25,4	22,1	14,2		0,100	-1008000	36,60	-1009000	(+)
		1,5"	60,3	38,1	34,8	21,1		0,140	-1128000	41,10	-1129000	(+)
		2"	73,0	50,8	47,5	28,9		0,230	-2008000	44,00	-2009000	(+)
		2,5"	79,4	63,5	60,2	35,3		0,340	-2128000	62,40	-2129000	(+)
		3"	85,7	76,2	72,9	43,1		0,620	-3008000	87,00	-3009000	(+)
		4"	104,8	101,6	97,4	56,8		0,840	-4008000	122,40	-4009000	(+)



Deltaferritgehalt < 3,0%

content of delta-ferrite < 3,0%

HyCom-T-Stück kurz		Art.-Nr. 10407-						AISI 316L-1.4404				
ISO		DN	A	B	C	D	E	Gew.	Art.-Nr.	Preis	Art.-Nr.	Preis
DIN 11865-TK-B		mm	mm	mm	mm	mm	mm	kg	Ra<0,8	EUR	Ra<0,4	EUR
HyCom-tee short		13,5	32,0	13,5	10,3	8,3		0,020	-0088000	36,10	-0089000	(+)
ISO		17,2	34,0	17,2	14,0	10,1		0,030	-0108000	36,40	-0109000	(+)
DIN 11865-TK-B		21,3	36,0	21,3	18,1	12,2		0,050	-0158000	36,70	-0159000	(+)
		26,9	55,0	26,9	23,7	15,0		0,080	-0208000	39,60	-0209000	(+)
		33,7	60,0	33,7	29,7	18,4		0,110	-0258000	40,90	-0259000	(+)
		42,4	65,0	42,4	38,4	23,2		0,150	-0328000	42,20	-0329000	(+)
		48,3	65,0	48,3	44,3	26,7		0,240	-0408000	44,20	-0409000	(+)
		60,3	90,0	60,3	56,3	33,7		0,480	-0508000	59,20	-0509000	(+)
		76,1	110,0	76,1	72,1	43,1		0,650	-0658000	84,30	-0659000	(+)
		88,9	130,0	88,9	84,3	49,5		0,910	-0808000	105,40	-0809000	(+)
		114,3	160,0	114,3	109,7	63,2		1,110	-1008000	129,90	-1009000	(+)



Deltaferritgehalt < 3,0%

content of delta-ferrite < 3,0%

(+) Preis auf Anfrage

(+) price on inquiry

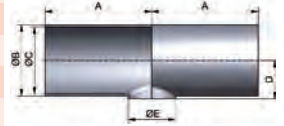


**Hygienearmaturen – HyCom-Armaturen**
**hygienic fittings – HyCom-fittings**
**Art.-Nr. 10413-**
**AISI 316L-1.4404**

DN	A	B	C	D	E	Gew.	Art.-Nr.	Preis	Art.-Nr.	Preis
mm	mm	mm	mm	mm	mm	kg	Ra<0,8	EUR	Ra<0,4	EUR
15-10	35,0	19,0	16,0	11,0	13,0	0,040	-0158010	(+)	-0159010	(+)
20-10	40,0	23,0	20,0	13,0	13,0	0,070	-0208010	(+)	-0209010	(+)
20-15	40,0	23,0	20,0	13,0	19,0	0,060	-0208015	(+)	-0209015	(+)
25-10	50,0	29,0	26,0	16,0	13,0	0,110	-0258010	(+)	-0259010	(+)
25-15	50,0	29,0	26,0	16,0	19,0	0,100	-0258015	(+)	-0259015	(+)
25-20	50,0	29,0	26,0	16,0	23,0	0,090	-0258020	(+)	-0259020	(+)
32-15	55,0	35,0	32,0	19,0	19,0	0,130	-0328015	(+)	-0329015	(+)
32-20	55,0	35,0	32,0	19,0	23,0	0,130	-0328020	(+)	-0329020	(+)
32-25	55,0	35,0	32,0	19,0	29,0	0,130	-0328025	(+)	-0329025	(+)
40-15	60,0	41,0	38,0	22,0	19,0	0,160	-0408015	(+)	-0409015	(+)
40-20	60,0	41,0	38,0	22,0	23,0	0,160	-0408020	(+)	-0409020	(+)
40-25	60,0	41,0	38,0	22,0	29,0	0,160	-0408025	(+)	-0409025	(+)
40-32	60,0	41,0	38,0	22,5	35,0	0,150	-0408032	(+)	-0409032	(+)
50-15	80,0	53,0	50,0	28,0	19,0	0,240	-0508015	(+)	-0509015	(+)
50-20	80,0	53,0	50,0	28,0	23,0	0,240	-0508020	(+)	-0509020	(+)
50-25	80,0	53,0	50,0	28,0	29,0	0,260	-0508025	(+)	-0509025	(+)
50-32	80,0	53,0	50,0	28,5	35,0	0,250	-0508032	(+)	-0509032	(+)
50-40	80,0	53,0	50,0	29,0	41,0	0,230	-0508040	(+)	-0509040	(+)
65-25	105,0	70,0	66,0	37,0	29,0	0,520	-0658025	(+)	-0659025	(+)
65-32	105,0	70,0	66,0	37,0	35,0	0,520	-0658032	(+)	-0659032	(+)
65-40	105,0	70,0	66,0	37,5	41,0	0,510	-0658040	(+)	-0659040	(+)
65-50	105,0	70,0	66,0	38,5	53,0	0,520	-0658050	(+)	-0659050	(+)
80-40	130,0	85,0	81,0	45,0	41,0	0,700	-0808040	(+)	-0809040	(+)
80-50	130,0	85,0	81,0	46,0	53,0	0,690	-0808050	(+)	-0809050	(+)
80-65	130,0	85,0	81,0	47,5	70,0	0,680	-0808065	(+)	-0809065	(+)
100-50	155,0	104,0	100,0	55,5	53,0	0,940	-1008050	(+)	-1009050	(+)
100-65	155,0	104,0	100,0	57,0	70,0	0,950	-1008065	(+)	-1009065	(+)
100-80	155,0	104,0	100,0	57,0	85,0	0,950	-1008080	(+)	-1009080	(+)

Deltaferritgehalt &lt; 3,0%

content of delta-ferrite &lt; 3,0%

**HyCom-  
Red-T-Stück kurz  
DIN  
DIN 11865-TK-A**  
  
**HyCom-  
reduced tee short  
DIN  
DIN 11865-TK-A**

**Art.-Nr. 10414-**
**AISI 316L-1.4404**

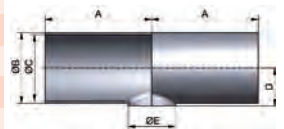
DN	A	B	C	D	E	Gew.	Art.-Nr.	Preis	Art.-Nr.	Preis
mm	mm	mm	mm	mm	mm	kg	Ra<0,8	EUR	Ra<0,4	EUR
0,75-0,5"	50,8	19,05	15,75	11,0	12,7	0,040	-0348012	(+)	-0349012	(+)
1-0,5"	54,0	25,4	22,1	14,2	12,7	0,110	-1008012	(+)	-1009012	(+)
1-0,75"	54,0	25,4	22,1	14,2	19,05	0,100	-1008034	(+)	-1009034	(+)
1,5-0,75"	60,3	38,1	34,8	20,6	19,05	0,160	-1128034	(+)	-1129034	(+)
1,5-1"	60,3	38,1	34,8	20,6	25,4	0,160	-1128100	(+)	-1129100	(+)
2-1"	73,0	50,8	47,5	26,9	25,4	0,240	-2008100	(+)	-2009100	(+)
2-1,5"	73,0	50,8	47,5	27,4	38,1	0,230	-2008112	(+)	-2009112	(+)
2,5-1"	79,4	63,5	60,2	33,3	25,4	0,520	-2128100	(+)	-2129100	(+)
2,5-1,5"	79,4	63,5	60,2	33,8	38,1	0,510	-2128112	(+)	-2129112	(+)
2,5-2"	79,4	63,5	60,2	35,3	50,8	0,520	-2128200	(+)	-2129200	(+)
3-1,5"	85,7	76,2	72,9	40,1	38,1	0,510	-3008112	(+)	-3009112	(+)
3-2"	85,7	76,2	72,9	41,6	50,8	0,690	-3008200	(+)	-3009200	(+)
3-2,5"	85,7	76,2	72,9	41,6	63,5	0,680	-3008212	(+)	-3009212	(+)
4-2"	104,8	101,6	97,4	54,3	50,8	0,950	-4008200	(+)	-4009200	(+)
4-2,5"	104,8	101,6	97,4	54,3	63,5	0,950	-4008212	(+)	-4009212	(+)
4-3"	104,8	101,6	97,4	55,8	76,2	0,950	-4008300	(+)	-4009300	(+)

Deltaferritgehalt &lt; 3,0%

content of delta-ferrite &lt; 3,0%

(+) Preis auf Anfrage

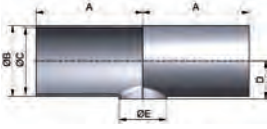
(+) price on inquiry

**HyCom-  
Red- T-Stück kurz  
ASME  
DIN 11865-TK-C**  
  
**HyCom-  
reduced tee short  
ASME  
DIN 11865-TK-C**




Hygienearmaturen – HyCom-Armaturen hygienic fittings – HyCom-fittings

HyCom-Red-T-St. kurz ISO DIN 11865-TK-B	Art.-Nr. 10415-							AISI 316L-1.4404			
	DN	A mm	B mm	C mm	D mm	E mm	Gew. kg	Art.-Nr. Ra<0,8	Preis EUR	Art.-Nr. Ra<0,4	Preis EUR
HyCom-reduced tee short ISO DIN 11865-TK-B	17,2-13,5	34,0	17,2	14,0	10,1	13,5	0,040	-0108008	(+)	-0109008	(+)
	21,3-13,5	36,0	21,3	18,1	12,2	13,5	0,040	-0158008	(+)	-0159008	(+)
	21,3-17,2	36,0	21,3	18,1	12,2	17,2	0,040	-0158010	(+)	-0159010	(+)
	26,9-13,5	55,0	26,9	23,7	15,0	13,5	0,070	-0208008	(+)	-0209008	(+)
	26,9-17,2	55,0	26,9	23,7	15,0	17,2	0,060	-0208010	(+)	-0209010	(+)
	26,9-21,3	55,0	26,9	23,7	15,0	21,3	0,060	-0208015	(+)	-0209015	(+)
	33,7-17,2	60,0	33,7	29,7	18,4	17,2	0,100	-0258010	(+)	-0259010	(+)
	33,7-21,3	60,0	33,7	29,7	18,4	21,3	0,100	-0258015	(+)	-0259015	(+)
	33,7-26,9	60,0	33,7	29,7	18,4	26,9	0,100	-0258020	(+)	-0259020	(+)
	42,4-21,3	65,0	42,4	38,4	22,7	21,3	0,130	-0328015	(+)	-0329015	(+)
	42,4-26,9	65,0	42,4	38,4	22,7	26,9	0,130	-0328020	(+)	-0329020	(+)
	42,4-33,7	65,0	42,4	38,4	22,7	33,7	0,130	-0328025	(+)	-0329025	(+)
	48,3-21,3	65,0	48,3	44,3	25,7	21,3	0,160	-0408015	(+)	-0409015	(+)
	48,3-26,9	65,0	48,3	44,3	25,7	26,9	0,160	-0408020	(+)	-0409020	(+)
	48,3-33,7	65,0	48,3	44,3	25,7	33,7	0,160	-0408025	(+)	-0409025	(+)
	48,3-42,4	65,0	48,3	44,3	26,2	42,4	0,160	-0408032	(+)	-0409032	(+)
	60,3-21,3	90,0	60,3	56,3	31,7	21,3	0,260	-0508015	(+)	-0509015	(+)
	60,3-26,9	90,0	60,3	56,3	31,7	26,9	0,260	-0508020	(+)	-0509020	(+)
	60,3-33,7	90,0	60,3	56,3	31,7	33,7	0,260	-0508025	(+)	-0509025	(+)
	60,3-42,4	90,0	60,3	56,3	32,2	42,4	0,260	-0508032	(+)	-0509032	(+)
	60,3-48,3	90,0	60,3	56,3	32,7	48,3	0,260	-0508040	(+)	-0509040	(+)
	76,1-33,7	110,0	76,1	72,1	40,1	33,7	0,520	-0658025	(+)	-0659025	(+)
	76,1-42,4	110,0	76,1	72,1	40,1	42,4	0,520	-0658032	(+)	-0659032	(+)
	76,1-48,3	110,0	76,1	72,1	40,6	48,3	0,520	-0658040	(+)	-0659040	(+)
	76,1-60,3	110,0	76,1	72,1	41,6	60,3	0,520	-0658050	(+)	-0659050	(+)
	88,9-48,3	130,0	88,9	84,3	47,0	48,3	0,700	-0808040	(+)	-0809040	(+)
	88,9-60,3	130,0	88,9	84,3	48,0	60,3	0,700	-0808050	(+)	-0809050	(+)
	88,9-76,1	130,0	88,9	84,3	49,5	76,1	0,700	-0808065	(+)	-0809065	(+)
114,3-60,3	160,0	114,3	109,7	60,7	60,3	0,940	-1008050	(+)	-1009050	(+)	
114,3-76,1	160,0	114,3	109,7	62,2	76,1	0,940	-1008065	(+)	-1009065	(+)	
114,3-88,9	160,0	114,3	109,7	62,2	88,9	0,940	-1008080	(+)	-1009080	(+)	



Deltaferritgehalt < 3,0% content of delta-ferrite < 3,0%  
(+) Preis auf Anfrage (+) price on inquiry